

dxguides.info

Europe on Shortwave



**Guide to shortwave
broadcasting in Europe**

October 2024 (A24)

Europe on Shortwave

Compiled and edited by Tony Rogers.

DX Guides: www.dxguides.info Email: dxguides@gmail.com

Updated: 1 October 2024

The latest edition of this guide is always available at www.dxguides.info

Whilst there may be errors and omissions, the strong point of the guides is the ability to correct and update quickly. Please do not hesitate to let me know if you see something that doesn't look right. Thanks!

Descriptions used in this guide may have been taken from radio station websites and/or Wikipedia.

Albania

Radio Televizioni Shqiptar

Radio Televizioni Shqiptar (English: Albanian Radio and Television; mostly called RTSH) is the national public broadcasting company of Albania.

International broadcasting on shortwave

Radio Tirana International

Radio Tirana International is the external service of Radio Televizioni Shqiptar. Although no longer broadcasting from transmitters in Albania, Radio Tirana International still produces programmes that can be heard online and until the B22 season it's English service been re-broadcast on shortwave by Radio Miami International in Florida. However, this has now been discontinued.

Andorra

Aqui Radio Andorra - From the Archives of Radio Andorra

Usually on the first Sunday of the month there are broadcasts produced by Christian Milling to celebrate the history of Radio Andorra.

Transmitter site: Shortwaveservice, Germany.

Time/UTC	Next expected broadcast	kHz	kW	Target area
1600-1800	Sunday 6 October 2024	6005	10	Europe
1900-2100	Sunday 6 October 2024	3985	1	Europe



Austria

Österreichischer Rundfunk

Österreichischer Rundfunk (ORF - Austrian Broadcasting Corporation) is Austria's largest media provider, operating four national television and twelve radio channels, as well as a comprehensive range of websites.

Ö1 International

Ö1 International is the official international broadcasting station of Austria. The shortwave transmission consists of programming from the domestic Ö1 channel with a few changes.

Transmitter site: Moosbrunn (See below).

Time/UTC	Days	Language	kHz	kW	Target area
0500-0533	Mon-Sat	German	6155	100	Europe

Österreichische Rundfunksender GmbH & Co KG

Österreichische Rundfunksender GmbH & Co KG owns and operates the shortwave transmitting station at Moosbrunn, a municipality in the district of Bruck an der Leitha in the Austrian state of Lower Austria. ORS offer the largest directional antenna system for shortwave in Europe. Shortwave relays from ORS are as follows for A24:

Time/UTC	Days	Station	Language	kHz	kW	Target area
0200-0230	Daily	Adventist World Radio	Urdu	9510	100	South Asia
0230-0300	Daily	Adventist World Radio	Punjabi	9510	100	South Asia
0330-0400	Daily	Adventist World Radio	Persian	11870	100	West Asia
0400-0430	Daily	Adventist World Radio	Turkish	11870	100	West Asia
0500-0530	Daily	Adventist World Radio	Hausa	15560	100	West Africa
0600-0700	Daily	Adventist World Radio	Arabic	15560	100	North Africa
0700-0730	Daily	Adventist World Radio	French	15610	100	West Africa
0800-0830	Daily	Adventist World Radio	French	15145	100	North Africa
0800-0900	1st Sun/mth	Welle 370	German	6140	100	Europe
0900-1000	Sun	Radio DARC	German	6070	100	Europe
1100-1200	2nd Sun/mth	SM Radio Dessau	German	6070	100	Europe
1400-1430	Daily	Adventist World Radio	Urdu	17725	100	South Asia
1500-1530	Daily	Adventist World Radio	Turkish	15265	100	West Asia
1530-1600	Daily	Adventist World Radio	Punjabi	17725	100	South Asia
1600-1630	Daily	Adventist World Radio	Urdu	17565	100	South Asia
1630-1700	Daily	Adventist World Radio	Persian	15605	100	West Asia
1800-1900	Daily	Adventist World Radio	Arabic	11955	100	North Africa
1900-1930	Daily	Adventist World Radio	Hausa	15440	100	West Africa
1930-2000	Daily	Adventist World Radio	French	17570	100	West & Central Africa
2000-2030	Daily	Adventist World Radio	Dyula	11955	100	West Africa
2030-2100	Daily	Adventist World Radio	French	15440	100	West Africa

Moosbrunn to close on 31 December 2024

It has been reported that ORS will close the Moosbrunn site on 31 December 2024. This follows the news that AWR will discontinue its shortwave broadcasts from all sites that it hires airtime on at the end of October 2024. This includes Moosbrunn where it accounts for nearly all of the activity in A24.

Azores

RTP Açores

RTP, formally Rádio e Televisão de Portugal, is the public service broadcasting organisation of Portugal. RTP Antena 1 Açores is a regional station for the Azores. There is no broadcasting on shortwave.

Belarus

Belteleradio

The National State TV and Radio Company of the Republic of Belarus), known as Belteleradiocompany or simply Belteleradio, is the state radio and television broadcasting service in Belarus.

Radio Belarus International

Radio Belarus International is the External Service of BRTC. It has programmes in several languages as part of a live stream on the Radio Belarus website at <http://www.radiobelarus.by/en>, but broadcasts on shortwave have been discontinued.

Belgium

VRT / RTBF / BRF

Vlaamse Radio en Televisieomroep (VRT), Radio-Télévision Belge de la Communauté Française (RTBF) and Belgisches Rundfunk und Fernsehzentrum der Deutschsprachigen Gemeinschaft (BRF) are the Dutch, French and German language broadcasting networks in Belgium.

There is no longer any broadcasting on shortwave from these organisations. RTBF International was the station owned by RTBF and it discontinued its shortwave service on 31 December 2009. Radio Vlaanderen Internationaal was the international broadcasting service of VRT and shortwave and other services ended on 31 December 2011.

Private radio stations on shortwave

Radio Onda

Radio Onda is a licensed Belgian radio station. The station's website says "We are on shortwave on the frequencies of 6140, 9530 and 17820 kHz for all of Europe and on DAB+ for Brussels capital. Here you will find, in addition to good French music, the best international hits from the 60s, 70s, 80s and 90s, and also, of course, good Brazilian music!". The three shortwave frequencies mentioned have been registered with the HFCC for A24, but only 6140 was reported at weekends during the B23 season. The shortwave operation is separate from the DAB+ station in Brussels, with shortwave broadcasts usually made according to the operators' availability. The transmitter site for shortwave is not in Belgium but at Borculo, a city in the eastern Netherlands, in the municipality of Berkelland, Gelderland.

Days	Language	kHz	kW	Target area
Sat/Sun (and irregular on other days)	Portuguese (with ID's in other languages)	6140	1	Europe

Bosnia and Herzegovina

Radio-Televizija Bosne i Hercegovine (BHRT) / Radio-Televizija Federacije Bone i Hercegovine (RTV FBiH) / Radio Televizija Republike Srpske (RTRS)

BHRT, RTV FBiH and RTRS are the Bosnian, Croatian and Serbian language broadcasting networks in Bosnia and Herzegovina. There is no broadcasting on shortwave.

Bulgaria

Bulgarian National Radio

Bulgarian National Radio is Bulgaria's national radio broadcasting organisation. It operates two national and nine regional channels, as well as an international service, Radio Bulgaria, which broadcasts online in 11 languages. Radio Bulgaria ceased broadcasting on shortwave from its own transmitters in Bulgaria on 31 January 2012.

International broadcasting on shortwave

Spaceline Bulgaria - Kostinbrod

Spaceline Ltd Bulgaria was established in 1995 in Bulgaria from group of experts in telecommunications, TV and Radio broadcasting with main objective to provide transmission facilities and technical services. It manages the operation of the NURTS-owned transmitting site at Kostinbrod and is a service provider of shortwave radio broadcasting. Kostinbrod is a town in western Bulgaria, located 15 km west of the capital city of Sofia.

Time/UTC	Days	Station	Language	kHz	kW	Target area
1500-1700	Daily	Overcomer Ministry	English	17900	100	Europe, India, Middle East
1545-1600	Daily	Bible Voice Broadcasting	Arabic	11600	250	Middle East
1600-1700	Daily	Overcomer Ministry	English	11600	100	Europe, India, Middle East
1600-1900	Daily	Overcomer Ministry	English	9400	100	Europe, India, Middle East
1700-1730	Daily	Radio Taiwan Int.	Russian	9790	50	Russia/Eastern Europe
1710-1730	Mon/Wed	Bible Voice Broadcasting	Arabic	9490	100	Middle East
1730-1745	Daily	Bible Voice Broadcasting	Arabic	9490	100	Middle East
1800-1900	Daily	IRRS Shortwave	English	7290	50	Western Europe
1900-1930	Daily	Radio Taiwan Int.	French	6005	100	Western Europe
1900-1930	Daily	Radio Taiwan Int.	German	5900	100	Western Europe
1930-1945	Daily	Bible Voice Broadcasting	Arabic	5900	250	Middle East
1945-2000	Daily	Bible Voice Broadcasting	Arabic	5900	250	Middle East
				9400	250	North Africa
2000-0500	Daily	Overcomer Ministry	English	5900	50	Europe, India, Middle East
2100-2200	Fri	KSKO Alaska	English	5900	50	Europe/ECNA

Please note that there may be other relays via Kostinbrod for A24 not showing in this schedule.

Space Line DRM. From the Space Line website (www.spaceline.bg/drm): "Space Line Ltd is participating in the Digital Radio Mondiale broadcasting standard practical developments since the very beginning. We are: The first to introduce the DRM standard in Bulgaria; The first to modify old type SW broadcast transmitter for successful commercial operation on DRM from Bulgaria in our transmission facility Kostinbrod; The first to operate DRM broadcasting service from Bulgaria for Bulgarian National Radio and WRN; Over 14 broadcasting transmitters modified to DRM since then at our transmitter site and internationally; The first to open common DRM platform for international broadcasters, for saving operational costs and increase of audience reach. DRM Consortium associate member and strong supporter of all Digital Radio related activities". A demonstration of DRM capability was aired from Kostinbrod to the the DRM Digital Radio General Assembly in Dubai on 19 May 2024 using 18950 kHz.

Croatia

Hrvatska Radiotelevizija (HRT)

HRT is the national public broadcasting service of Croatia. There is no broadcasting on shortwave. Voice of Croatia discontinued shortwave broadcasts on 1 January 2013.

Czech Republic

Český rozhlas

Český rozhlas (CRo) is the public radio broadcaster of the Czech Republic operating continuously since 1923. It is the oldest radio broadcaster in continental Europe and the second oldest in Europe after the BBC. Český Rozhlas was established in 1992 by the Czech Radio Act, which sets out the framework for its operation and financing. It acts as the successor to the previous state-owned Czechoslovak Radio which ceased to exist by 1992.

International broadcasting on shortwave

Radio Prague International

Radio Prague International (Český rozhlas 7) is the official international broadcasting station of the Czech Republic.

Sites: Although shortwave broadcasts directly from the Czech Republic ceased in 2011, Radio Prague International is now heard via Radio Miami International in Florida and by means of a WRN relay from Dhabbaya, UAE.

Time/UTC	Days	Language	kHz	Transmitter site	kW	Target area
0200-0230	Daily	Spanish	9955	Okeechobee FL	100	Latin America
0230-0300	Daily	Spanish	5010	Okeechobee FL	100	Caribbean
0300-0330	Daily	English	9955	Okeechobee FL	100	Latin America
0330-0400	Daily	French	9955	Okeechobee FL	100	Latin America
0600-0630	Mon/Tue	English	15770	Okeechobee FL	100	Europe
1130-1200	Daily	Spanish	5010	Okeechobee FL	100	Caribbean
1200-1230	Daily	English	9955	Okeechobee FL	100	Latin America
2300-2330	Daily	French	5850	Okeechobee FL	100	North America
2330-0000	Daily	English	5850	Okeechobee FL	100	North America

RPI programmes that form part of the WRN North America / WRN Russian streams that are re-broadcast on SW

Time/UTC	Days	Language	kHz	Transmitter site	kW	Target area
0500-0530	Tue-Thu	English	7780	Okeechobee FL	100	Central America
1500-1530	Wed	Russian	13650	Dhabbaya UAE	250	Eastern Europe

For further details see WRN entry under United Kingdom

Denmark

DR

DR, officially the Danish Broadcasting Corporation in English, is a Danish public-service radio and television broadcasting company. Founded in 1925 as a public-service organization, it is Denmark's oldest and largest electronic media enterprise. DR is a founding member of the European Broadcasting Union. Radio Denmark's shortwave facility at Herstedvester was closed in 1990. It then used the facilities of NRK in Norway until the external service was closed for good on 31 December 2003.

Private radio stations on shortwave

Radio208

Radio208 plays progressive classic rock from 1964-1984 with no studio hosts.

Transmitter site: Hvidovre, Denmark.

Time/UTC	Days	kHz	kW	Target area
24 hours	Daily	5970	0.2	Europe

For any updates to the Radio208 schedule see <https://www.facebook.com/p/Radio208-100054343164077/>

World Music Radio

World Music Radio (WMR) play a mix of music from all corners of the world, focusing on tropical world music.

Transmitter sites: Bramming, Randers and Mårslet, Denmark.

Time/UTC	Days	kHz	Site	kW	Target area
24 hours	Daily	5930	Bramming	0.15	Europe
		15700	Randers	0.3	Europe (also reported further afield)
		25800	Mårslet	0.3	Europe (also reported further afield)

For any updates to the WMR schedule see <https://www.facebook.com/WorldMusicRadioWMR/>

Radio OZ-Viola

Radio OZ-Viola is a small low power legal hobby AM radio station.

Transmitter site: Hillerød, Denmark.

<i>Time/UTC</i>	<i>Days</i>	<i>Language</i>	<i>kHz</i>	<i>kW</i>	<i>Target area</i>
1100-1300	Sat/Sun	English	6055	0.1	Europe
2100-2200	Wed	English	5980	0.1	Europe

Estonia

Eesti Rahvusringhääling (ERR)

ERR is the public broadcast service of Estonia. There is no broadcasting on shortwave.

Faroe Islands

Kringvarp Føroya

Kringvarp Føroya is the national broadcasting company of the Faroe Islands. There is no broadcasting on shortwave from the Faroe Islands.

Finland

Yleisradio Oy

Yleisradio Oy (lit. 'Public Radio, Ltd'), abbreviated as Yle and translated to English as the Finnish Broadcasting Company, is Finland's national public broadcasting company. There is no longer any broadcasting on shortwave by Yle.

Private radio stations on shortwave

Scandinavian Weekend Radio

SWR broadcasts on the first Saturday of the month (except for January, May and September) for 24 hours starting at 0000 local time (2200 UTC / 2100 UTC in summer). SWR is also broadcast on mediumwave 1602 kHz and FM 94.9. More information about SWR can be found at: <http://www.swradio.net/>

Transmitter site: Virrat, Pirkanmaa region, Southwest Finland

Remaining broadcasts for 2024 are: 4/5 October, 1/2 November and 6/7 December (the November and December broadcasts will be one hour later than the times stated below)

<i>Time/UTC</i>	<i>Day</i>	<i>Next on air</i>	<i>Language</i>	<i>kHz</i>	<i>kW</i>	<i>Target area</i>
2100-0900	Friday	4 October	Finnish/English	6170	0.1	Northern Europe
				11690	0.1	Northern Europe
0900-1200	Saturday	5 October	Finnish/English	6170	0.1	Northern Europe
				11720	0.1	Northern Europe
1200-1600	Saturday	5 October	Finnish/English	5980	0.1	Northern Europe
				11690	0.1	Northern Europe
1600-2100	Saturday	5 October	Finnish/English	6170	0.1	Northern Europe
				11690	0.1	Northern Europe

RealMix Radio

RealMix Radio is a new shortwave radio station belonging to radio enthusiast Joakim Weckström. It operates from Raasepori and has received a short-term radio license for the frequency 6195 kHz from the Finnish Transport and Communications Agency, Traficom (the frequency was initially 6185 kHz but was changed). Test broadcasts began over the weekend of 2/3 March 2024 and the radio permit was initially valid for weekends until the end of May 2024 and has been extended with the station returning on 30 June "after a short summer break". More information and the latest updates: <https://www.facebook.com/p/RealMix-Radio-61556704123570/>

Transmitter site: Raasepori, Uusimaa region, South Coast of Finland

<i>Operating</i>	<i>kHz</i>	<i>kW</i>	<i>Target area</i>
Weekends	6195 (although moved to 6185 on 29 Sept. to avoid interference)	0.015	Northern Europe

Radio Blacksmith Knoll

Radio Blacksmith Knoll's first test transmission took place on 30 June 2024 and it was licensed to operate between 1 July to 6 August 2024. The station describes itself as "your go-to station for a unique radio experience using only public domain materials. From classic music to timeless stories, from trivia challenges to scavenger hunts, we've got plenty of surprises in store to keep you engaged and entertained". More information: <https://blacksmith-knoll.blogspot.com>.

Transmitter site: Pori, Satakunta region, West Coast of Finland

<i>Operating</i>	<i>kHz</i>	<i>kW</i>	<i>Target area</i>
Weekends	6120	0.025	Northern Europe

Radio Piko

Radio Piko, broadcasting from Asikkala, was launched on Saturday 1 June 2024 and was last active on Saturdays and Sundays until 15 August 2024. Its assigned frequencies are 3990, 5980 and 9770 kHz. Power is 10 Watts, and the format is big band music. According to their webpage, it describes itself as an "infamous Triple L low power, low antenna, low budget operation". More information: <http://radiopiko.fi/>

Transmitter site: Asikkala, Päijänne Tavastia, Southern Finland

Operating	kHz	kW	Target area
Weekends	3990, 5980, 9770	0.01	Northern Europe

France

Radio France

Radio France is the French national public radio broadcaster. The Radio France group is 100% owned by the French State. Nearly 80% of Radio France's funding comes from Television licence, the remaining 20% comes from own resources, mainly from advertising and diversification activities developed by Radio France.

International broadcasting on shortwave

Radio France Internationale

RFI is the state-owned international radio news network of France. It is a channel of France Médias Monde.

Time/UTC	Days	Language	kHz	Transmitter	kW	Target area
0400-0500	Daily	French	11700	Issoudun, France	250	Africa
			15300	Issoudun, France	250	Africa
0430-0500	Daily	Swahili	11790	Issoudun, France	250	East Africa
			0500-0600	Daily	French	11700
			13695			Issoudun, France
			15300	Issoudun, France	250	Africa
0530-0600	Daily	Swahili	15215	Issoudun, France	250	East Africa
0600-0630	Daily	Hausa	11995	Issoudun, France	250	West Africa
			13740	Issoudun, France	250	West Africa
0600-0700	Daily	French	9790	Issoudun, France	250	Africa
			11700	Issoudun, France	250	Africa
			15300	Issoudun, France	250	Africa
			17850	Issoudun, France	250	Africa
0700-0730	Daily	Mandingo	13660	Issoudun, France	250	West Africa
		Hausa	15325	Issoudun, France	250	West Africa
			17660	Issoudun, France	250	West Africa
0700-0800	Daily	French	13695	Issoudun, France	250	Africa
			15300	Issoudun, France	250	Africa
			17850	Issoudun, France	250	Africa
			21580	Issoudun, France	250	Africa
0730-0800	Daily	Fulani	15330	Issoudun, France	250	West Africa
0800-0830	Daily	Mandingo	15455	Issoudun, France	250	West Africa
0800-0900	Daily	French	15300	Issoudun, France	250	Africa
			17660	Issoudun, France	250	Africa
			17850	Issoudun, France	250	Africa
			21580	Issoudun, France	250	Africa
0830-0900	Daily	Fulani	15455	Issoudun, France	250	West Africa
0900-1000	Daily	French	15300	Issoudun, France	500	Africa
			17850	Issoudun, France	250	Africa
			21580	Issoudun, France	250	Africa
			21690	Issoudun, France	250	Africa
			21690	Issoudun, France	250	Africa
1200-1230	Daily	Mandingo	17620	Issoudun, France	250	West Africa
1200-1300	Daily	French	17660	Talata Volonondry, Madagascar	250	Africa
			17690	Issoudun, France	500	Africa
			21580	Issoudun, France	250	Africa
			21690	Issoudun, France	250	Africa
1300-1330	Daily	Fulani	17660	Issoudun, France	250	West Africa
1300-1400	Sun	Vietnamese	9650	Paochung, Taiwan	100	South-East Asia
1500-1600	Daily	Swahili	21690	Issoudun, France	500	East Africa
1600-1700	Daily	Hausa	17850	Issoudun, France	500	West Africa
1600-1700	Daily	Arabic	17785	Issoudun, France	500	Sudan
1700-1730	Daily	Mandingo	15485	Issoudun, France	250	West Africa
1700-1800	Daily	French	17620	Issoudun, France	250	Africa
			17850	Issoudun, France	250	Africa
			21580	Issoudun, France	250	Africa

1730-1800	Daily	Fulfulde	15485	Issoudun, France	500	West Africa
1800-1900	Daily	French	15300	Issoudun, France	250	Africa
			17620	Issoudun, France	250	Africa
			17850	Issoudun, France	250	Africa
			21690	Issoudun, France	250	Africa
1900-2000	Daily	French	11995	Issoudun, France	250	Africa
			13740	Issoudun, France	250	Africa
			15300	Issoudun, France	250	Africa
			17850	Issoudun, France	250	Africa
1900-2000	Sun	French	13835	Issoudun, France	250	Africa
2000-2030	Daily	Hausa	11700	Issoudun, France	250	West Africa
2000-2200	Daily	French	9790	Issoudun, France	250	Africa
			11995	Issoudun, France	500	Africa



Relays via TDF International Broadcasting Centre - Issoudun

TDF is a French company which provides radio and television transmission and other services for the broadcasting and telecommunications sector in France. The International broadcasting centre of TDF is at Issoudun, Indre department. The relays listed below are in addition to Radio France Internationale and Monte Carlo Doualiya broadcasts.

Time/UTC	Days	Station	Language	kHz	kW	Target area
0100-0200	Daily	Radio República	Spanish	9490	150	Cuba
0200-0400	Daily	NHK World Japan	Japanese	6105	250	Central America
0300-0500	Daily	NHK World Japan	Japanese	9440	250	North Africa/Middle East
0315-0430	Daily	Radio Tamazuj	Arabic etc	7315	250	South Sudan
0430-0500	Daily	Radio Dabanga	Arabic etc	7315	250	Sudan
0500-0525	Mon-Fri	NHK World Japan	English	13710	250	East & Southern Africa
0500-0530	Sat/Sun	NHK World Japan	English	13710	250	East & Southern Africa
0530-0550	Daily	NHK World Japan	French	11730	250	North & West Africa
				13600	250	West, Central & East Africa
0600-0620	Daily	NHK World Japan	Arabic	17660	250	North Africa & Middle East
0800-1000	Daily	NHK World Japan	Japanese	15290	250	West & Central Africa
1215-1300	Mon-Fri	Deutsche Welle	Arabic	15275	500	Sudan
				17800	500	Sudan
1430-1450	Daily	NHK World Japan	Persian	13650	250	West Asia
1445-1600	Daily	Radio Tamazuj	Arabic	21485	250	South Sudan
1600-1630	Daily	Amharic Radio Int.	Amharic	17685	250	Horn of Africa
1600-1630	Mon/Wed/Fri	Radio Dirree Shaggar	Oromo	17575	250	Horn of Africa
1600-1630	Sat	Moresh Voice of Amhara	Amharic	15710	250	Horn of Africa
1630-1700	Sun	Pan American B'casting	Amharic	17815	150	Horn of Africa
1600-1700	Daily	Radio Dabanga	Arabic	17555	250	Sudan
1700-1730	Daily	Radio Dabanga	Arabic	15550	250	Sudan
1700-1800	Daily	1888 Radio	Amharic	17630	250	Horn of Africa
1700-1900	Daily	NHK World Japan	Japanese	15115	250	North Africa & Middle East
				17680	250	Central & Southern Africa
1700-1815	Wed/Sat	Voice of Fano	Amharic	15215	250	Horn of Africa
1900-2000	Mon	VORW Radio Int.	English	11925	100	Worldwide
1900-2000	Sun	Radio Taiwan Int.	French	13835	250	Africa
1900-2100	Daily	NHK World Japan	Japanese	13780	250	West, Central & East Africa
2000-2015	Fri/Sun	Pan American B'casting	English	9690	500	Pacific
2030-2050	Daily	NHK World Japan	French	7425	250	North & West Africa
2030-2100	Sun	Pan American B'casting	English	9690	500	Pacific

Telediffusion de France - DRM

TDF have irregular DRM transmissions on various frequencies. "DRM Reception Project Schedules" are maintained by Chris Mackerell and is well worth checking for the latest reports of TDF and others: www.drmtx.org/drmschedules

Some frequencies registered with HFCC for TDF DRM tests during the A24 season are 3965 5985 6080 6090 6120 7205 7350 9510 9550 9655 9815 11705 11760 13635 13650 13770 15480 15510 15540 15610 17810 and 21600 kHz

Radio for Peace International

RFPI broadcasts are structured around subjects touching on peace, humanism, human rights, the environment, freedom of the press. The objective is not to impose a reality but to provide food for thought so that everyone can walk in respect, listening, dialogue in order to co-build peace. Programmes WRMI (100 kW) and Channel 292 (10 kW).

Time/UTC	Days	Language	Station	kHz
0000-0100	Sun	Dari	WRMI	9395
0145-0200	Fri	Dari	WRMI	5850
0600-0615	Wed	Russian	WRMI	7730 and 15770
1145-1200	Mon/Tue/Sat	Russian	WRMI	7730 and 15770
1145-1200	Wed	Ukrainian	WRMI	7730 and 15770
1300-1400	Sun	Russian	WRMI	7730 and 15770
1330-1345	Sat	Russian	WRMI	7730 and 15770
2000-2030	Thu	Ukrainian	WRMI	7730
2000-2100	2nd Sat	Russian	Channel 292	6070
2030-2100	Thu	Russian	WRMI	7730



Germany

Radio stations in Germany are licensed by media authorities in individual states, a result of Germany's federal structure. There are three nationwide public radio stations: Deutschlandfunk, broadcasting news and background stories on current affairs; Deutschlandfunk Kultur, mostly broadcasting cultural programmes; Deutschlandfunk Nova, a digital-only station which mainly broadcasts science and technology stories. Other public radio stations, run by local public broadcasters are generally only available in the states which those broadcasters operate.

International broadcasting on shortwave

Deutsche Welle

Deutsche Welle (DW) is Germany's public international broadcaster.

Transmitter sites: All DW transmissions have ceased from their own shortwave transmitter sites in Germany and overseas and DW now hires airtime on other facilities. The only services remaining on shortwave for A24 are those in Amharic and a weekly programme in Arabic for Sudan

Time/UTC	Days	Language	kHz	Transmitter site	kW	Target area
1215-1300	Wed	Arabic	15275	Issoudun, France	250	Sudan
			17800	Issoudun, France	250	Sudan
1600-1700	Daily	Amharic	15275	Issoudun, France	500	Horn of Africa
			17800	Issoudun, France	500	Horn of Africa
1830-1915	Wed	Arabic	15275	Nauen, Germany	250	Sudan
			17840	Nauen, Germany	250	Sudan

Media Broadcast GmbH - shortwave relays from Nauen

Media Broadcast is Germany's largest service provider in the broadcasting and media industry. MBR offers airtime to various international and religious broadcasting organisations.

Transmitter site: MBR own and operate the transmitter site at Nauen, a town in the Havelland district, in Brandenburg.

Time/UTC	Days	Station	Language	kHz	kW	Target
0300-0330	Daily	Adventist World Radio	Oromo	11960	125	Horn of Africa
0330-0400	Daily	Adventist World Radio	Tigrinya	11960	125	Horn of Africa
0400-0430	Daily	Adventist World Radio	Amharic	15515	250	Horn of Africa
0430-0450	Daily	NHK World Japan	Russian	6165	125	Europe
0430-0500	Daily	Adventist World Radio	French	7390	250	North Africa
0500-0515	Fri	Bible Voice Broadcasting	Arabic	13730	250	Middle East
0600-0615	Daily	Bible Voice Broadcasting	Arabic	11655	125	North Africa
0600-0630	Daily	Adventist World Radio	French	15220	250	West Africa
				17790	250	West Africa
0700-0800	Daily	Adventist World Radio	Arabic	15220	250	North Africa
0800-1000	Sun	Radio SE-TA 2	German	6095	100	Europe
0830-0900	Daily	Adventist World Radio	Tachelhit	15220	250	North-West Africa
0900-1000	Sun	Adventist World Radio	Italian	9610	125	Europe
1000-1100	20/10/2024	SM Radio Dessau	German	6095	100	Europe
1030-1100	Sat/Sun	Evang. Missions-Gem.	German	6055	125	Europe
1300-1400	Tue/Thu	Music 4 Joy	Music	17670	100	East Asia (DRM)
1400-1430	1st Sat/mon	Bible Voice Broadcasting	English	17650	250	South Asia
1430-1500	Sat	Bible Voice Broadcasting	English	17650	250	South Asia
1430-1500	Sun	Bible Voice Broadcasting	Dari	17650	250	Afghanistan
1430-1500	Daily	Bible Voice Broadcasting	Nuer	15300	100	Sudan
1530-1600	Sat	V efire (Radio) Golos And	Russian	11700	100	Russia

1600-1630	Sun-Tue	Bible Voice Broadcasting	Oromo	15310	100	Horn of Africa
1600-1630	Thu/Fri	Bible Voice Broadcasting	Tigrinya	15310	100	Horn of Africa
1600-1630	Sat	V efire (Radio) Golos And	Chechen	11700	100	Russia
1630-1700	Daily	Adventist World Radio	Amharic	17725	250	Horn of Africa
1630-1700	Daily	Adventist World Radio	Tigrinya	15490	250	Horn of Africa
1630-1700	Sat/Sun	Bible Voice Broadcasting	Somali	15310	100	Horn of Africa
1700-1715	Fri	Bible Voice Broadcasting	English	9810	100	Middle East
1700-1730	Sat/Sun	Bible Voice Broadcasting	Tigrigna	15310	100	Horn of Africa
1700-1730	Tue-Thu	Bible Voice Broadcasting	Amharic	15310	100	Horn of Africa
1700-1730	Thu	Bible Voice Broadcasting	English	9810	100	Middle East
1700-1730	Wed/Fri/Sun	Voice of Oromo Liberation	Oromo/Arabic	15420	100	NE Africa
1730-1800	Daily	Adventist World Radio	Oromo	17725	250	Horn of Africa
1730-1800	Daily	Advenstist World Radio	Masai	17570	250	East Africa
1730-1830	Sat	Bible Voice Broadcasting	English	9810	100	Middle East
1730-1915	Sun	Bible Voice Broadcasting	English	9810	100	Middle East
1800-1830	Fri	Bible Voice Broadcasting	Persian	11855	100	Iran
1800-1900	Thu	Bible Voice Broadcasting	Persian	11855	100	Iran
1800-1900	Tue/Thu	Music 4 Joy	Music	13730	100	Eastern Africa (DRM)
1815-1830	Sun	Bible Voice Broadcasting	English	9635	250	Middle East
1830-1900	Tue/Sun	Bible Voice Broadcasting	Persian	11855	100	Iran
1830-1900	Sun	Bible Voice Broadcasting	Spanish	9720	100	Europe
1830-1915	Wed	Deutsche Welle	Arabic	15275	250	Sudan
				17840	250	Sudan
1830-1930	Tue/Thu	Music 4 Joy	Music	11710	100	M East/W Asia (DRM)
1900-2000	Daily	Adventist World Radio	Arabic	11800	250	North Africa
1930-2000	Daily	Adventist World Radio	Tachelhit	11955	125	North-West Africa
1930-2000	Daily	Adventist World Radio	Ibo	15440	250	West Africa
2000-2030	Daily	Adventist World Radio	French	9555	250	West Africa
				9780	250	North Africa
2000-2030	Daily	Adventist World Radio	Moore	11800	250	West Africa
2000-2100	Tue/Thu	Music 4 Joy	Music	11615	100	Western Africa (DRM)
2030-2100	Daily	Adventist World Radio	Yoruba	11790	250	West Africa
2100-2130	Daily	Adventist World Radio	Nigerian Pidgin	12040	250	West Africa
2130-2200	Daily	Adventist World Radio	Twi	12040	250	West Africa

MEDIA BROADCAST

USAGM Germany Transmitting Station (shortwave relays from Biblis and Lampertheim)

The USAGM sites at Biblis and Lampertheim are used for broadcasts to Africa, the Middle East, and Asia.

Transmitter sites: Biblis and Lampertheim, both located in Hesse.

<i>Time/UTC</i>	<i>Days</i>	<i>Station</i>	<i>Language</i>	<i>kHz</i>	<i>Site</i>	<i>kW</i>	<i>Target area</i>
0030-0100	Daily	VOA Radio Ashna	Pashto	7495	Lampertheim	100	Afghanistan
0230-0300	Daily	RFE/RL Radio Azadi	Pashto	9480	Biblis	100	Afghanistan
0300-0330	Daily	RFE/RL Radio Azadi	Dari	9480	Biblis	100	Afghanistan
0330-0430	Daily	RFE/RL Radio Azadi	Pashto	9480	Biblis	100	Afghanistan
1200-1300	Daily	Radio Free Asia	Tibetan	17860	Lampertheim	100	Tibet & environs
1300-1700	Daily	VOA Deewa Radio	Pashto	15640	Lampertheim	100	Afghanistan
1400-1500	Daily	RFE/RL Radio Azatlyk	Turkmen	11890	Biblis	100	Central Asia
1400-1500	Daily	Voice of America	Kurdish	11985	Biblis	100	Middle East
1400-1500	Daily	Voice of America	Tibetan	17490	Biblis	100	Tibet & environs
				17690	Lampertheim	100	Tibet & environs
1530-1600	Daily	Voice of America	English	17530	Lampertheim	100	Africa
1600-1700	Daily	Voice of America	Tibetan	9760	Lampertheim	100	Tibet & environs
1630-1700	Mon-Fri	Voice of America	English	15660	Lampertheim	100	South Sudan
1630-1700	Sat/Sun	Voice of America	English	5940	Lampertheim	100	Africa
1700-1730	Mon-Fri	Voice of America	Amharic	15660	Lampertheim	100	Horn of Africa
1700-1800	Daily	Voice of America	Kurdish	7515	Biblis	100	Middle East
				11620	Biblis	100	Middle East
1700-1800	Daily	Voice of America	English	5940	Lampertheim	100	Africa
1700-1900	Daily	VOA Deewa Radio	Pashto	12035	Lampertheim	100	Afghanistan
1730-1800	Mon-Fri	Voice of America	Oromo	15660	Lampertheim	100	Horn of Africa
1900-1930	Daily	Voice of America	Tigrinya	15660	Lampertheim	100	Horn of Africa

Privately-owned shortwave transmitters

Several privately-owned shortwave transmitters have been licensed in Germany and the owners either broadcast their own programmes and/or those produced by other organisations. Transmitters currently on-air are as follows:

<u>kHz</u>	<u>Operator</u>	<u>Location</u>	<u>Schedule/notes</u>
3955	Channel 292	Rohrbach Waal	Daily 2100-2000
3975	Shortwave Radio	Winsen	Daily 1700-0000
3985	Shortwaveservice	Kall-Krekel	Daily 1600-1900 (Radio Slovakia Int. etc)
3995	HCJB	Weenermoor	24/7 (Segenswelle at night)
5920	HCJB	Weenermoor	24/7 (Segenswelle at night)
6005	Shortwaveservice	Kall-Krekel	Daily 1000-1530 (Radio Slovakia Int)
6070	Channel 292	Rohrbach Waal	24/7
6085	Shortwaveservice	Kall-Krekel	Daily 0700-1700 (Radio MiAmigo Int)
6115	Radio SE-TA 2	Gera	Irregular
6150	Europa 24	Datteln	Daily 0700-1500
6160	Shortwave Radio	Winsen	Daily 0700-2200
6195	Radio SE-TA 2	Waldheim	Irregular (in DRM only)
7365	HCJB	Weenermoor	24/7 (Segenswelle in Russian)
9670	Channel 292	Rohrbach Waal	24/7
15785	BitExpress	Erlangen	24/7 DRM-mode ('Funklust')

If anyone can update the times of operation for any of the German private shortwave stations, please let me know at dxguides@gmail.com. Thanks! (TR)

Channel 292

Radio Channel 292 was initially launched as Radio 6150 in 2012. It was renamed in 2013.

Transmitter site: Radio Channel 292 broadcasts on 3955, 6070 and 9670 kHz from transmitters which are licensed to Intermedicom GmbH at Rohrbach, Waal (the exception is at 0900-1000 Sundays on 6070 kHz when Radio Channel 292 hires airtime on a 100 kW transmitter at Moosbrunn, Austria, for the Radio DARC programme. It may also hire airtime on other transmitters for use on any of its registered frequencies)

Further details and a weekly programme guide is available at www.channel292.de

<i>kHz</i>	<i>Time/UTC</i>	<i>Days</i>	<i>kW</i>	<i>Target area</i>
3955	2100-2000	Daily	10	Europe
6070	24 hours	Daily	10	Europe
9670	24 Hours	Daily	10	Europe

Europa 24

Europa 24 owns a transmitter at Datteln, which is licensed to Interessengemeinschaft Hochfrequenztechnik e.V.

Transmitter site: Datteln, a town in the district of Recklinghausen, in North Rhine-Westphalia.

<i>Time/UTC</i>	<i>Days</i>	<i>kHz</i>	<i>kW</i>	<i>Target area</i>
0700-1500	Daily	6150	0.25	Europe

Radio HCJB Deutschland

The German department of HCJB in Quito, Ecuador, was founded in 1953 and began producing programmes for German-speakers in Europe and South America. More recently, the Radio HCJB eV working group in Germany has been campaigning for more Christian programmes on the radio and to achieve this a range of programmes for Central Europe has been expanded step by step since 2012, and is now broadcast around the clock.

Transmitter site: Weenermoor, a district of Weener, a town in Lower Saxony, near the border with the Netherlands.

Further details: agradiohcjb.wixsite.com/hcjb-deutschland

<i>Time/UTC</i>	<i>Days</i>	<i>kHz</i>	<i>kW</i>	<i>Target area</i>	<i>Comments</i>
24 hours	Daily	3995	1.5	Europe	see schedule below
24 hours	Daily	5920	1.5	Europe	see schedule below
24 hours	Daily	7365	1.5	Europe	Segenswelle in Russian

Schedule for 3995 and 5920 kHz:

0000-0300 UTC in German

0300-0400 UTC in Russian

0400-2200 UTC in German

2200-0000 UTC in Russian (Segenswelle)

Radio SE-TA 2

Radio SE-TA 2 broadcasts primarily in German to German citizens living outside of Germany. The operator of the station is Christophe Gerber and Christoph says that comments, reviews, music requests and reception reports are welcome at SE-TA@web.de.

<i>kHz</i>	<i>Transmitter site</i>	<i>Note</i>
6115	Gera, Thuringia	Next date of operation to be confirmed
6195	Waldheim, Saxony	irregular; DRM only

Shortwave Radio

The station is run by shortwave radio enthusiasts on a non-political and non-commercial basis, in accordance with a licence issued by the German Federal Net Agency.

Transmitter site: Winsen an der Aller, a town in the district of Celle in the state of Lower Saxony.

Further details: www.shortwaveradio.de

Time/UTC	Days	kHz	kW	Target area
0700-2200	Daily	6160	1	Europe
1700-0000	Daily	3975	1	Europe

Shortwaveservice

The shortwave transmitters at Kall are owned and operated by Shortwaveservice and are located on the site of a former utility radio station of the German police force. Transmitters operate on 3985, 6005 and 6085 kHz.

Transmitter site: Kall, Krekel, a municipality in the district of Euskirchen in the state of North Rhine-Westphalia.

Further details: www.shortwaveservice.com

3985 kHz (1 kW) to Europe

UTC	Station	Language
1600-1700	SRF - Echo of Time	German
1700-1730	Radio Slovakia International	German
1730-1800	Radio Slovakia International	English
1800-1830	Radio Slovakia International	French
1830-1900	Radio Slovakia International	Spanish

6005 kHz (10 kW) to Europe

UTC	Station	Language
1000-1030	Radio Slovakia International	German
1030-1100	Radio Slovakia International	English
1100-1130	Radio Slovakia International	French
1130-1200	Radio Slovakia International	Spanish
1200-1230	Radio Slovakia International	German
1230-1300	Radio Slovakia International	English
1300-1330	Radio Slovakia International	French
1330-1400	Radio Slovakia International	German
1400-1430	Radio Slovakia International	English
1430-1500	Radio Slovakia International	French
1500-1530	Radio Slovakia International	Spanish

6085 kHz (20 kW) to Europe

Radio Mi Amigo International is a Spanish-based Internet radio station that also broadcasts on shortwave.

UTC	Station	Languages
0700-1700	Radio Mi Amigo	Dutch/English/French/German

Other notable German shortwave stations

Deutscher Wetterdienst

Deutscher Wetterdienst (DWD), Germany's National Meteorological Service, broadcasts shipping forecasts for the Baltic and the North Sea each day at the times specified below.

Transmitter site: Pinneberg, a town in the federal state of Schleswig-Holstein in northern Germany.

Further details: www.dwd.de

Time/UTC	Days	kHz	kW	Target area
0600-0630	Daily	5905	10	Europe
		6180	10	Europe
1200-1230	Daily	5905	10	Europe
		6180	10	Europe
1600-1630	Daily	5905	10	Europe
		6180	10	Europe
2000-2030	Daily	5905	10	Europe
		6180	10	Europe



Joy (Radio Joystick)

Radio Joystick is a long established station that started as a pirate operation but has since been relayed legally on SW. More about the station can be found on its website at radiojoystick.de

Time/UTC	Days	Language	kHz	Transmitter site	kW	Target area
0900-1000	1st Sun	German	7330	Moosbrunn, Austria	100	Europe

Missionsbote

Missionsbote (Mission Messenger) is part of Evangelische Missions-Gemeinden in Deutschland (Evangelical Mission Communities in Germany).

Further details: missionsbote.de/radio/

<i>Time/UTC</i>	<i>Days</i>	<i>Language</i>	<i>kHz</i>	<i>Site</i>	<i>kW</i>	<i>Target area</i>
1030-1100	Sat/Sun	German	6055	Nauen, Germany	125	Europe

Radio DARC

Radio DARC is produced by the association of German radio amateurs, Deutscher Amatuer-Radio-Club e.V. (DARC). Programmes are aired on Channel 292, Rohrbach, and also via Moosbrunn Austria, with airtime hired by Channel 292.

Further details: www.darc.de/nachrichten/radio-darc/

<i>Time/UTC</i>	<i>Days</i>	<i>Language</i>	<i>kHz</i>	<i>Transmitter site</i>	<i>kW</i>	<i>Target area</i>
0900-1000	Sun	German	6070	Moosbrunn, Austria	100	Europe
			9670	Rohrbach, Germany	10	Europe
1500-1600	Mon	German	6070	Rohrbach, Germany	10	Europe
			9670	Rohrbach, Germany	10	Europe
1800-1900	Daily	German	3955	Rohrbach, Germany	10	Europe

Welle 370

Welle 370 is associated with the Sender und Funktechnikmuseum at Königs Wusterhausen.

Further details: www.welle370.de

<i>Time/UTC</i>	<i>kHz</i>	<i>Site</i>	<i>kW</i>	<i>On-air dates (all on Sunday)</i>
0800-0900	6095	Nauen	100	6 October, 3 November, 1 December 2024
1100-1200	6070	Rohrbach	10	27 October, 24 November, 22 December 2024

Note: times will be adjusted when Daylight Saving Time ends on 26 October 2024.

SM Radio Dessau

The SM Radio Dessau programme is produced in Dessau by Ralf-Torsten and Max Berger. Further details can be found at smradio-dessau.de. These are the on-air dates for 2024, although further updates will be made as soon as they are announced by SM Radio Dessau.

<i>2024</i>	<i>Time/UTC</i>	<i>kHz</i>	<i>Site</i>	<i>kW</i>	<i>Topic</i>
13 October	1100-1200	6070	Moosbrunn	100	Superradio 2000 O (Part 3/3 - only 20 min)
20 October	1000-1100	6095	Nauen	100	repeat from 13 October
10 November	1200-1300	6070	Moosbrunn	100	
17 November	1200-1300	6070	Moosbrunn	100	
08 December	1200-1300	6070	Moosbrunn	100	
15 December	1100-1200	6095	Nauen	100	repeat from 6 December



Annual broadcasts on shortwave

Radio Gruss an Bord

NDR Info sends Christmas messages to seafarers all over the world on each Christmas Eve. Families and friends wish their loved ones at sea a happy holiday in the traditional programme "Gruss an Bord"! (Greeting on Board). Broadcasts are made on NDR Info and NDR Info Spezial, and so that ships on the world's oceans can receive the traditional broadcast, NDR also rents time on several shortwave transmitters located overseas.

<i>Time/UTC</i>	<i>Next broadcast date</i>	<i>Language</i>	<i>Frequencies</i>
1800-2100	Sunday 24 December 2024	German	frequencies will be confirmed nearer the date of broadcast

Radio Öömrang

Radio Öömrang (Amrum) has an annual broadcast to North America in February in the North Frisian dialect, German and English. The February date coincides with local festivities in Amrum in the German North Frisian Islands.

Transmitter site: broadcasts are usually made each year via Issoudun, France.

<i>Time/UTC</i>	<i>Next broadcast date</i>	<i>Languages</i>	<i>kHz</i>	<i>kW</i>
1600-1700	Friday 21 February 2025	North Frisian dialect, German, English	15215 (as used for B23)	500

DRM broadcasts on shortwave from Germany

BitExpress "Funklust"

Funklust is an independent media service provided by students at the Friedrich-Alexander University of Erlangen-Nuremberg in Bavaria. It broadcasts in DRM (xHE-AAC)

Transmitter site: Erlangen, Bavaria.

<i>Time/UTC</i>	<i>Days</i>	<i>kHz</i>	<i>mode</i>	<i>kW</i>	<i>Target area</i>
24 hours	Daily	15785	DRM	0.1	Europe

Music 4 Joy

Music 4 Joy broadcasts different styles of music worldwide over the facilities of Media Broadcast GmbH.

Transmitter site: Broadcasts are made via MBR, Nauen, Germany and are in DRM mode.

<i>Time/UTC</i>	<i>Days</i>	<i>kHz</i>	<i>kW</i>	<i>Mode</i>	<i>Target</i>
1300-1400	Tue/Thu	17670	100	DRM	East Asia
1800-1900	Tue/Thu	13730	100	DRM	Eastern Africa
1830-1930	Tue/Thu	11710	100	DRM	Middle East/West Asia
2000-2100	Tue/Thu	11615	100	DRM	Western Africa

Gibraltar

Gibraltar Broadcasting Corporation (GBC)

Gibraltar Broadcasting Corporation is Gibraltar's public service broadcaster. There is no broadcasting on shortwave from Gibraltar.

Greece

ERT

The Hellenic Broadcasting Corporation (romanized: Ellinikí Radiofonía Tileórasi A.E., lit. Greek Radio [and] Television S.A.), commonly shortened to ERT (Greek: EPT), is the state-owned public radio and television broadcaster of Greece. The Voice of Greece was the international service of Greek state radio.

Shortwave broadcasts from the Voice of Greece were discontinued in June 2022.

Hungary

Magyar Rádió

Magyar Rádió is Hungary's publicly funded radio broadcasting organisation. Radio Budapest, the external service of Hungarian radio, discontinued shortwave broadcasts in July 2007.

Iceland

Ríkisútvarpið (RÚV)

RÚV is Iceland's national public-service broadcaster. There is no broadcasting on shortwave from Iceland.

Ireland

Raidió Teilifís Éireann (RTÉ)

RTÉ is Ireland's National Public Service Media organisation.

International broadcasting on shortwave

RTÉ

Although it does not broadcast from transmitters in Ireland, an RTÉ programme that features as part of the World Radio Network (WRN) stream for North America is currently re-broadcast on shortwave by Radio Miami International, although this arrangement may change at any time.

<i>Time/UTC</i>	<i>Days</i>	<i>Language</i>	<i>Transmitter site</i>	<i>kHz</i>	<i>kW</i>	<i>Target area</i>
0930-1000	Mon-Sat	English	Okeechobee FL, USA	9455	100	Western North America

Italy

Radiotelevisione Italiana

RAI - Radiotelevisione Italiana, commercially styled as Rai since 2000 and known until 1954 as Radio Audizioni Italiane, is the national public broadcasting company of Italy, owned by the Ministry of Economy and Finance. RAI operates many terrestrial and subscription television channels and radio stations. RAI no longer broadcasts on shortwave, having closed its service on 30 September 2007.

International broadcasting on shortwave

IRRS - NEXUS-IBA

NEXUS-International Broadcasting Association is a coalition of broadcasters and independent programme producers and enjoys official status as a United Nations Non-Governmental Organization (NGO). IRRS operates from offices in Milan, Italy, and Dublin, Ireland, with technical facilities located around the world.

0800-0900 Saturdays in English and German, and may include:

Time/UTC	Days	Programme	kHz	Transmitter site	kW	Target area
0800-0900	1st/2nd/3rd Sat	Radio City	9510	Saftica, Romania	100	Europe
0800-0900	4th Sat	Radio Rasant	9510	Saftica, Romania	100	Europe

0930-1200 Sundays in English:

Time/UTC	Days	Programme	kHz	Transmitter site	kW	Target area
0930-1200	Sun	Various programmes	9510	Saftica, Romania	100	Europe

1400-1430 Daily in Korean:

Time/UTC	Days	Programme	kHz	Transmitter site	kW	Target area
1400-1430	Daily	European Gospel Radio	17895	Galbeni, Romania	300	East Asia

1500-1530 Monday/Tuesday/Wednesday/Friday/Saturday in Oromo:

Time/UTC	Days	Programme	kHz	Transmitter site	kW	Target area
1500-1530	Mon-Wed/Fri/Sat	Oromia National Media	15425	Galbeni, Romania	300	Africa

Broadcasts of Oromo National Media may be jammed by the Ethiopian authorities.

1800-1900 Daily in English, and may include:

Time/UTC	Days	Programme	kHz	Transmitter site	kW	Target area
1815-1844	1st/2nd/4th Fri	World of Radio	7290	Kostinbrod, Bulgaria	50	Europe
1830-1900	Tue	Wavescan	7290	Kostinbrod, Bulgaria	50	Europe
1830-1900	Sat	Gospel Miracle Time	7290	Kostinbrod, Bulgaria	50	Europe

Kosovo

Radiotelevizioni i Kosovës

RTK is the national broadcasting service of Kosovo. There is no broadcasting on shortwave.

Latvia

Latvijas Radio (LR)

LR is Latvia's national public-service radio broadcasting network. There is no broadcasting on shortwave.

Luxembourg

RTL

RTL, formerly Radio Luxembourg, is a French commercial radio network owned by the RTL Group. There is no longer any broadcasting on shortwave. The shortwave service was discontinued on 30 December 1992.

Madeira

RTP

RTP, formally Rádio e Televisão de Portugal, is the public service broadcasting organisation of Portugal. There is no broadcasting on shortwave.

Malta

Public Broadcasting Services Limited (PBS)

PBS is the public broadcaster of Malta. There is no longer any broadcasting on shortwave.

Moldova

Teleradio-Moldova

Teleradio-Moldova is the state-owned national radio and television broadcaster. There is no broadcasting on shortwave.

Pridnestrovsky Radioteletsentr - Maiac

The self-proclaimed Pridnestrovian Moldavian Republic is an unrecognised state which controls part of the geographical region of Transnistria (the area between the Dniester river and Ukraine) and also the city of Bender and its surrounding localities on the west bank. This area was part of the former Moldavian SSR, and since the dissolution of the USSR has been claimed by the Republic of Moldova as the Administrative-Territorial Units of the Left Bank of the Dniester. The region is considered by the UN to be part of Moldova.

The Transnistrian Radio and Television Center (TRTC) is located in Maiac, an urban settlement (according to Transnistrian legislation), or city (according to the Moldovan legislation) in the Grigoriopol District, 11 km (7 miles) northeast of Grigoriopol, on the Ukrainian border. It is a large broadcasting centre for shortwave and mediumwave, which was built up in the years between 1968 and 1975. In October 2007 the Russian unitary enterprise Russian Television and Radio Networks acquired 100% of shares of the TRTC. As of November 2023, the shortwave transmitters are inactive.

Netherlands

The Dutch public broadcasting system is a set of organisations that together take care of public service television and radio broadcasting in the Netherlands. It is composed of a foundation called Nederlandse Publieke Omroep (NPO), which acts as its governing body, and a number of public broadcasters. The Dutch Media Act 2008 regulates how air time is divided and puts the administration of the public broadcasting system in the hands of the Board of Directors of NPO. In addition to the national broadcasters, there are also regional broadcasters and local broadcasters in the Netherlands.

Radio Netherlands

Radio Netherlands (RNW; Dutch: Radio Nederland Wereldomroep) was a public radio and television network based in Hilversum, producing and transmitting programmes for international audiences outside the Netherlands from 1947 to 2012. Its services in Dutch ended on 10 May 2012. English and Indonesian language services ceased on 29 June 2012 due to steep budget cuts imposed by the Dutch government and a concomitant change in focus.

Dutch private radio stations on shortwave

Several privately-owned shortwave transmitters have been licensed in the Netherlands. Stations currently on-air are:

kHz	Operator	Location	Schedule
5940	Radio Piepzender	Zwolle	Irregular - Weekends (main frequency)
5955	Radio Veronica	Westdorp	24/7
6020	Radio Casanova International	Winterswijk	Irregular
6060	Radio Casanova International	Winterswijk	Irregular
6110	Radio Delta International	Elburg	Sundays 0500-0800
6130	Radio Europe	Alphen a/d Rijn	24/7
6140	Radio Onda	Borculo	see entry for Belgium
6170	Radio Delta International	Elburg	Fri/Sat/Sun 1800-2200
6185	Radio Piepzender	Zwolle	Irregular (alternative to 5940 kHz)
7270	Rock Power Radio	Nijmegen	Daily - approximately 1000-1700
7405	Radio Piepzender	Zwolle	Irregular - Weekends
7425	Radio Piepzender	Zwolle	Irregular (alternative to 7405 kHz)
9800	Radio Delta International	Elburg	Irregular
12030	Radio Delta International	Elburg	Irregular
13865	Radio Piepzender	Zwolle	Weekends

Radio Casanova International

Radio Casanova International is a licensed Dutch shortwave station.

Website: radio-casanova.jouwweb.nl

Transmitter site: Winterswijk, Gelderland - 1 kW.

kHz	Schedule/comments
6020	Irregular
6060	Irregular

Radio Delta International

Radio Delta International is a Dutch free radio station founded in 1971. Nowadays they are broadcasting with a license.

Website: radiodelta.am

Transmitter site: Elburg, Gelderland - 1 kW.

kHz* *Schedule/comments

6110 Sundays 0500-0800
6170 Friday/Saturday/Sunday 1800-2200
9800 Irregular
12030 Irregular

Radio Europe

Radio Europe was newly registered with HFCC from 28 June 2021.

Transmitter site: Alphen aan den Rijn, Zuid Holland - 1 kW.

kHz* *Schedule/comments

6130 24/7

Radio Piepzender

Radio Piepzender is based in Zwolle, east Netherlands. Broadcasts are irregular.

Transmitter site: Zwolle, Overijssel - 1 kW

kHz* *Schedule/comments

5940 Irregular - Weekends (main frequency)
6185 Irregular - Evenings (alternative to 5940 kHz)
7405 Irregular - Weekends
7425 Irregular (alternative to 7405 kHz)
13595 Irregular - Weekends

Radio Veronica

Radio Veronica replaced Sunlite on 5955 kHz in December 2023.

Website: www.radioveronica.nl

Transmitter site: Westdorpe, Zeeland - 0.075 kW.

kHz* *Schedule/comments

5955 24/7

Rock Power Radio

Rock Power Radio plays continuous classic pop & pop rock music mainly from the 60s and 70s.

Website: www.n3tx.com

Transmitter site: Nijmegen, Gelderland - 1 kW.

kHz* *Schedule/comments

7270 Daily approximately 1000-1700

International broadcasting on shortwave

The Mighty KBC

The Mighty KBC is a station that airs rock n' roll oldies and classic rock to truckers across Europe. It is also aired over Radio Miami International. These are the times that feature as part of the WRMI schedule as of April 2024:

<i>Days</i>	<i>Time/UTC</i>	<i>kHz</i>	<i>Transmitter site</i>	<i>kW</i>	<i>Target area</i>	
Friday	1100-1200	15770	WRMI Okeechobee FL	100	Europe	
Saturday	0200-0300	5850	WRMI Okeechobee FL	100	North America	
		7730	WRMI Okeechobee FL	100	North America	
		7780	WRMI Okeechobee FL	100	Central America	
Sunday	0100-0300	5950	WRMI Okeechobee FL	100	North America	
		9455	WRMI Okeechobee FL	100	North America	
		1200-1300	15770	WRMI Okeechobee FL	100	Europe
		2200-2300	5950	WRMI Okeechobee FL	100	North America



North Macedonia

Makedonska Radio Televizija (MRT)

MRT is the public broadcasting organisation of the Republic of North Macedonia. There is no broadcasting on shortwave.

Norway

NRK

The Norwegian Broadcasting Corporation, commonly known by its initialism NRK, is the Norwegian government-owned radio and television public broadcasting company, and the largest media organisation in Norway. Shortwave broadcasting from NRK/Radio Norway were discontinued on 31 December 2003.

Private radio stations on shortwave

LKB/LLK Bergen Kringkaster

LKB/LLK Bergen Kringkaster is a museum/heritage radio station at Erdal that is operated by a group of enthusiasts. As well as its own programmes it has in the past also aired services operated by Northern Star Media Services AS (see below).

Radio Northern Star

Radio Northern Star is operated by Northern Star Media Services AS and are broadcast over the facilities of LKB/LLK:

Transmitter site: Erdal, a village in Askøy municipality in Vestland county - 0.7 kW

<i>kHz</i>	<i>Days</i>	<i>Schedule</i>
5895	Daily	0459-2205

Poland

Polskie Radio

Polskie Radio (English: Polish Radio) is Poland's national public-service radio broadcasting organisation.

International broadcasting on shortwave

Radio Poland

Radio Poland is part of Poland's public radio network, Polish Radio. Shortwave broadcasts no longer originate from Poland itself, but Radio Poland was heard as recently as November 2023 with a programme in English that formed part of the World Radio Network (WRN) stream for North America and was re-broadcast on shortwave by Radio Miami International. However, this has now been discontinued (it was at 2300-0000 on 7570 kHz)

New museum to recognize Warsaw radio station that was second biggest in the world: In memory of what was once the second tallest radio transmission station in the world, scientists are looking to set up a museum to commemorate its history. Built after Poland regained independence at the end of the First World War, by 1923 half of Europe was sending telegrams to the USA via the Transatlantic Radiotelegraphic Broadcasting Center in Warsaw. Consisting of 10 massive 126-meter-tall towers [over 430 feet], the radio station's transmitter was powerful enough to reach both North and South America. The Warsaw station was also one of the best equipped in the world with two machine transmitters of 200 kW each being powered by a 500 kW diesel-powered generator ensuring 24-hour communication with the U.S. When WWII broke out following Hitler's invasion of Poland, German troops captured the station allowing the Nazis to communicate with their U-boat fleets and with Japan. At the end of the war, they destroyed it, the detonation of which broke windows of houses over 16 km away. Now covered by the forest, among the trees it is still possible to find parts of the broadcasting station. In 2018, a three-meter-high monument commemorating the antenna of the Transatlantic Radiotelegraph Center was unveiled. Now, the Faculty of Electronics at the Military University of Technology is attempting to reconstruct the transmitter as part of a museum dedicated to it. The MEWA radio station will broadcast short-wave programs commemorating the history of the transatlantic radio station. The museum will preserve the memory of its engineers and builders and the milestone event in the history of Poland, which was the establishment of direct radio communication with the United States. PAP - Science in Poland (by Karolina Duszczyk, 20 April 2024 - original here); HFCC registrations continue to show two frequencies for this project. For A24 it is 7415 kHz (0800-1430 UTC) and 7430 kHz (0800-1100 UTC,) but there is no mention yet of any start date anywhere.

Portugal

RTP

RTP, formally Rádio e Televisão de Portugal, is the public service broadcasting organisation of Portugal. Shortwave broadcasting from RDP Internacional, as it was called then, was discontinued on 1 June 2011.

Romania

Radio România

The Romanian Radio Broadcasting Company (Romanian: Societatea Română de Radiodifuziune), informally referred to as Radio Romania (Romanian: Radio România), is the public radio broadcaster in Romania.

International broadcasting on shortwave

Radiocomunicatii S.A.

Radiocomunicatii S.A. is a Romanian national company, which works under the brand name Radiocom. Radiocom is a leading company in Romania in the sphere of broadcasting and Telecommunication Services supply. As the national transmitter network owner, it also operates the shortwave transmitters at Galbeni, Săftica and Țigănești, used by Radio Romania International.

Radio România Internațional

Radio România Internațional is a Romanian radio station owned by the Romanian public radio broadcaster Societatea Română de Radiodifuziune (SRR, the national public radio in Romania).

Two out of the five transmitters broadcasting RRI's programmes were temporarily suspended on 1 August 2023. The RRI website at that time stated: "Dear friends, the Radio Romania Board of Administrators decided to temporarily suspend the use of 2 out of the 5 Radiocom shortwave transmitters that ensure the broadcast of Radio Romania International programmes, because of budget cuts. As of 1 August, our programmes are aired via one transmitter in Țigănești, one in Săftica (both of them near Bucharest) and one in Galbeni (east). As soon as the budget of the institution is restored, we will resume broadcasts on all 5 transmitters. The RRI programmes in Romanian, English, French, German, Spanish, Russian, Arabic, Chinese and Hebrew are affected. All of them may be received on only one frequency instead of two, as of August 1, 2023". This situation remains for A24.

<i>Time/UTC</i>	<i>Days</i>	<i>Language</i>	<i>kHz</i>	<i>T'mitter site</i>	<i>kW</i>	<i>Target Area</i>
0000-0100	Daily	English	11620	Țigănești	300	North America
0000-0200	Daily	Romanian	9730	Galbeni	300	North America
0100-0200	Daily	French	11620	Țigănești	300	North America
0200-0300	Daily	Spanish	9700	Galbeni	300	Central America
			17760	Țigănești	300	South America
0300-0400	Daily	English	9740	Țigănești	300	North America
			15330	Galbeni	90	South Asia (DRM)
0400-0430	Daily	Chinese	15220	Țigănești	300	East Asia
0400-0500	Daily	Romanian	11740	Galbeni	300	Europe
0430-0500	Daily	Russian	11800	Țigănești	300	Western Russia
0500-0530	Daily	French	11740	Galbeni	300	Europe
			13580	Țigănești	300	West Africa
0530-0600	Daily	English	11960	Galbeni	300	Europe
			21550	Țigănești	300	Australia & South Asia
0600-0630	Daily	German	11620	Țigănești	300	Europe
0630-0700	Daily	Arabic	15130	Galbeni	300	Middle East
			17630	Țigănești	300	North Africa
0700-0800	Sun	Romanian	13750	Țigănești	300	Middle East
			15200	Galbeni	300	Middle East
0800-0900	Sun	Romanian	11650	Galbeni	300	North Africa
			13790	Țigănești	300	Middle East
0900-1000	Sun	Romanian	11650	Galbeni	300	Europe
			17630	Țigănești	300	North Africa
1000-1100	Daily	French	11650	Galbeni	300	Europe
			17630	Țigănești	300	North Africa
1100-1200	Daily	English	17630	Țigănești	300	Europe
			17670	Galbeni	300	Africa
1200-1230	Daily	Arabic	11700	Galbeni	300	Middle East
			17780	Țigănești	300	North Africa
1200-1300	Daily	Romanian	9490	Săftica	100	Europe
1230-1300	Daily	Chinese	17760	Țigănești	300	East Asia
1300-1400	Daily	Russian	13610	Țigănești	300	Eastern Russia
1300-1500	Daily	Romanian	11950	Galbeni	300	Europe
1400-1430	Daily	Italian	9520	Săftica	100	Europe
1400-1500	Daily	German	9600	Țigănești	300	Europe
1430-1500	Daily	Aromanian	5910	Săftica	100	Europe
1500-1530	Daily	Ukrainian	5910	Săftica	100	Europe
1500-1530	Daily	Russian	13660	Țigănești	300	Western Russia

1530-1600	Daily	Serbian	5910	Săftica	100	Europe
1530-1600	Daily	Arabic	11830	Galbeni	300	North Africa
			17780	Țigănești	300	Middle East
1600-1630	Daily	Italian	5910	Săftica	100	Europe
1600-1700	Mon-Sat	Romanian	9590	Galbeni	300	Middle East
1600-1700	Sun	Hebrew	9590	Galbeni	300	Middle East
1600-1700	Daily	French	11975	Țigănești	300	Europe (DRM)
1630-1700	Daily	Aromanian	5910	Săftica	100	Europe
1700-1730	Daily	Ukrainian	5910	Săftica	100	Europe
1700-1800	Daily	English	13750	Țigănești	90	Europe (DRM)
1700-2000	Daily	Romanian	11975	Galbeni	300	Europe
1730-1800	Daily	Serbian	5910	Săftica	100	Europe
1800-1830	Daily	Italian	5910	Săftica	30	Europe (DRM)
1800-1900	Daily	German	9570	Țigănești	90	Europe (DRM)
1830-1900	Daily	Aromanian	5910	Săftica	100	Europe
1900-1930	Daily	Ukrainian	5910	Săftica	100	Europe
1900-2000	Daily	Spanish	13860	Țigănești	300	Europe
1930-2000	Daily	Serbian	5910	Săftica	100	Europe
2000-2030	Daily	French	11975	Galbeni	300	Europe
2030-2100	Daily	English	11975	Galbeni	300	Europe
			13650	Țigănești	300	North America
2100-2200	Daily	Spanish	15170	Țigănești	90	South America (DRM)
2200-2300	Daily	English	9790	Țigănești	300	East Asia
			11800	Galbeni	300	Europe
2300-0000	Daily	Spanish	15300	Galbeni	300	South America
			21550	Țigănești	300	South America

IRRS Shortwave relays via Radiocom facilities

<i>Time/UTC</i>	<i>Days</i>	<i>Station</i>	<i>Lanugage</i>	<i>kHz</i>	<i>site</i>	<i>kW</i>	<i>Target area</i>
0800-0900	Sat	IRRS-brokered prgrs	English	9510	Săftica	100	Europe
0930-1200	Sun	IRRS-brokered prgr	English	9510	Săftica	100	Europe
1400-1430	Daily	European Gospel Radio	Korean	17895	Galbeni	300	East Asia
1500-1530	Mon-Wed/Fri/Sat	Oromia National Media	Oromo	15425	Galbeni	300	Africa

Russia

VGTRK

The All-Russia State Television and Radio Broadcasting Company is a national state-owned broadcaster which operates many television and radio channels. The company was founded in 1990 and is based in Moscow.

Margarita Simonyan, editor-in-chief of the Rossiya Segodnya, said in March 2014 that "We will stop using obsolete radio broadcasting models, when the signal is transmitted without any control and when it is impossible to calculate who listens to it and where". Voice of Russia (ex-Radio Moscow) ceased all broadcasts on shortwave from 1 April 2014, ending 85 years of international broadcasting from Moscow.

Domestic broadcasting on shortwave

The only licenced broadcasting station on shortwave in Russia at the current time is (or was) Radio Purga. It is located in Far Eastern Russia (not the European part of Russia, but mentioned here for convenience). It had broadcast on shortwave in DRM mode, but Alex Miatlikov points out that there do not appear to be any logs of the station since November 2021. Registrations have still being made with the HFCC for A24.

Unofficial broadcasting on shortwave

There are many unofficial (pirate) radio stations in Russia, but the one that has attracted a lot of interest in recent times is Music Wave Radio.

Music Wave Radio

Music Wave Radio has been widely heard recently in Europe and beyond. In a post to the British DX Club IO Group, Alexander Beryozkin commented that Music Wave Radio is a Russian pirate, but the transmitter may be located in Belarus. They also plan to start broadcasting on 1575 kHz. Both frequencies (3940 and 1575 kHz) were earlier used by Radio Bukhta Svobodnych Voln (Radio Free Waves Bay) and Radio Pyati Uglov (Radio 5 Angles). They announce e-mail address podradio@mail.ru and verify reports by eQSLs.

Usual frequency: 3940 kHz (and also reported occasionally on 13750 and 17700 kHz)

Target broadcasts on shortwave to Russia

RFE/RL Radio Liberty (Radio Svoboda)

Radio Free Europe/Radio Liberty (RFE/RL) is an American government-funded international media organisation that broadcasts and reports news, information, and analyses to Eastern Europe, Central Asia, the Caucasus, and the Middle East, where it states that "the free flow of information is either banned by government authorities or not fully developed. RFE/RL is a private 501(c)(3) corporation and is supervised by the U.S. Agency for Global Medi. Although not aired on shortwave at the time, following the Russian invasion of Ukraine daily broadcasts were made possible by listener contributions to "Shortwaves for Freedom", which purchased airtime at greatly discounted rates. Although the SFF campaign has now ended, WRMI still airs a Radio Liberty broadcast as follows:

Time/UTC	Days	Language	kHz	Transmitter site	kW	Target area
0400-0500	Mon-Sat	Russian	15770	WRMI Okeechobee FL, USA	100	Russia/Eastern Europe

Echo Sthlm

The station's website says "Echo Sthlm is a Stockholm-based, Russian-language radio station where you get unbiased news about Russia and the war in Ukraine. With in-depth discussions and interviews, we convey a picture that is relevant to a broad Russian audience. No censorship – just quality, fact-based content. Echo Sthlm was set up as a reaction to the Russian state's increasing censorship: several Russian radio stations, websites and media outlets have been forced to close down since the invasion of Ukraine. We therefore broadcast both as a podcast on the internet and via shortwave radio, so that listeners in Russia can stay informed despite censorship attempts". The station was set up by former staff of Radio Sweden's Russian service with their first shortwave broadcast on 24 March 2022.

Time/UTC	Days	Language	kHz	Transmitter site	kW	Target area
1900-2000	Tue/Sat	Russian	9670	Channel 292, Rohrbach, Germany	10	Russia/Eastern Europe

Echo Helsinki

Echo Helsinki is a partner station of Echo Stockholm established by the Swedish internet operator Bahnhof in November 2023 and broadcast on Channel 292.

Time/UTC	Days	Language	kHz	Transmitter site	kW	Target area
2000-2100	Tue/Thu/Sat	Russian	9670	Channel 292, Rohrbach, Germany	10	Russia/Eastern Europe

Voice of the Andes

This is a long-time broadcast on Saturdays only in Russian and Chechen on 11700 kHz. Their ID is "V efire (Radio) Golos And", i.e. "(Radio) The Voice of the Andes is on air", presenting themselves to be a part of HCJB. "Studiya Otkrovenie" = "Studio Revelation" is mentioned in their postal address announcement (thanks to Alexander Beryozkin for this explanation). The website of radiolife.org explains more about this: "With our formation in February 2000, we put an end to the backwardness of our region in the field of Christian sound recording. "Revelation" is one of the leading sound recording studios of the Central Black Earth Region. The initial goal of the studio was to record audio albums of the best Christian performers of the Central Black Earth Region. 2002 was a turning point, the studio began working in the field of Christian radio broadcasting, and programs for different age groups were launched. Then in 2006 the scope of activity expanded. We got the opportunity to record professional arrangements using high-quality samples of a symphony orchestra. Currently, the studio "Otkrovenie" is working in several directions: creating radio programs, arrangements, and working closely with World Radio "Voice of the Andes" (HCJB World Radio), "Radio Eli" (Tartu), as well as with satellite radio "New Life".

Time/UTC	Days	Language	kHz	Transmitter site	kW	Target area
1530-1600	Sat	Russian	11700	Nauen, Germany	100	Russia
1600-1630	Sat	Chechen	11700	Nauen, Germany	100	Russia

World Radio Network

WRN began shortwave broadcasts to Russia on 29 October 2023 with programming that appears on the WRN Russian stream (see entry for United Kingdom for other WRN streams currently heard on shortwave).

Time/UTC	Days	Programme	Language	kHz	Transmitter site	kW
1500-1530	Daily	schedule as below	Russian	13650	Dhabbaya, UAE	250
	Mon	Special programme				
	Tue	Radio Exterior de España				
	Wed	Radio Prague International				
	Thu	Radio Exterior de España				
	Fri	Special programme				
	Sat	Radio Exterior de España				
	Sun	On subject				
1530-1600	Daily	schedule as below	Russian	13650	Dhabbaya, UAE	250
	Mon	Bolt				
	Tue	Kaleidoscope				
	Wed	Kaleidoscope				
	Thu	Kaleidoscope				
	Fri	Figure of speech				
	Sat	Radio Panorama				
	Sun	UN Review				

1600-1620	Daily	NHK World Japan	Russian	13650	Dhabbaya, UAE	250
1620-1630	Daily	There's Time to Tell	Russian	13650	Dhabbaya, UAE	250
1630-1700	Daily	Radio Slovakia International	Russian	13650	Dhabbaya, UAE	250
1700-1800	Sat	BBC Russian	Russian	13650	Dhabbaya, UAE	250

Since 3 August 2024, Encompass has extended its relay of WRN Russian on 13650 kHz by one hour on Saturdays only until 1800 UTC. Alex Miatlikov confirms that there are now two podcasts at this time - a Friday edition of their regular news-based podcast and a literary podcast from archive, so the entire hour is usually filled with BBC.

Many thanks to Alex Miatlikov for keeping this schedule up-to-date

Serbia

Radio-Televizija Srbije (RTS)

RTS is the public broadcaster in Serbia. RTS currently operates 4 radio stations, under the name Radio Belgrade. International Radio of Serbia officially closed its shortwave service at the end of July 2015.

Slovakia

RTVS

Radio and Television of Slovakia is a nationwide public broadcasting state-funded organisation in Slovakia.

International broadcasting on shortwave

Radio Slovakia International

Radio Slovakia International (RSI) is Slovakia's official internet-based international broadcaster. Although shortwave broadcasts no longer originate from Slovakia, Radio Slovakia International is re-broadcast over the facilities of Radio Miami International in Florida and the ShortwaveService in Germany.

Time/UTC	Days	Language	kHz	Transmitter site	kW	Target area
0000-0030	Daily	Slovak	5850	Okeechobee FL, USA	100	North America
			7730	Okeechobee FL, USA	100	North America
			15770	Okeechobee FL, USA	100	Europe
0030-0100	Daily	English	5850	Okeechobee FL, USA	100	North America
			7730	Okeechobee FL, USA	100	North America
			15770	Okeechobee FL, USA	100	Europe
0030-0100	Daily	Spanish	5010	Okeechobee FL, USA	100	Caribbean
0130-0200	Tue-Sat	English	5800	Okeechobee FL, USA	100	Caribbean
0230-0300	Daily	Spanish	9955	Okeechobee FL, USA	100	Central/South America
0530-0600	Tue-Thu	English	7780	Okeechobee FL, USA	100	C America (rebroadcast of WRN stream)
0630-0700	Daily	Spanish	15770	Okeechobee FL, USA	100	Europe
1000-1030	Daily	German	6005	Kall, Krekel, Germany	1	Europe
1030-1100	Daily	English	6005	Kall, Krekel, Germany	1	Europe
1100-1130	Daily	French	6005	Kall, Krekel, Germany	1	Europe
1130-1145	Tue/Wed	English	15770	Okeechobee FL, USA	100	Europe (rebroadcast of WRN stream)
1130-1200	Daily	Spanish	6005	Kall, Krekel, Germany	1	Europe
1200-1230	Daily	German	6005	Kall, Krekel, Germany	1	Europe
1230-1300	Daily	English	6005	Kall, Krekel, Germany	1	Europe
1230-1300	Mon-Fri	Spanish	9955	Okeechobee FL, USA	100	Central/South America
1300-1330	Daily	French	6005	Kall, Krekel, Germany	1	Europe
1330-1400	Daily	German	6005	Kall, Krekel, Germany	1	Europe
1400-1430	Daily	English	6005	Kall, Krekel, Germany	1	Europe
1430-1500	Daily	French	6005	Kall, Krekel, Germany	1	Europe
1500-1530	Daily	Spanish	6005	Kall, Krekel, Germany	1	Europe
1630-1700	Daily	Russian	13650	Dhabbaya, UAE	250	Russia (rebroadcast of WRN Russian)
1700-1730	Daily	German	3985	Kall, Krekel, Germany	1	Europe
1730-1800	Daily	English	3985	Kall, Krekel, Germany	1	Europe
1800-1830	Daily	French	3985	Kall, Krekel, Germany	1	Europe
1830-1900	Daily	Spanish	3985	Kall, Krekel, Germany	1	Europe
2200-2230	Daily	English	5850	Okeechobee FL, USA	100	North America

Slovenia

Radiotelevizija Slovenija

Radiotelevizija Slovenija is the national public broadcaster of Slovenia. There is no broadcasting on shortwave.

Spain

Radio Nacional de España

Radio Nacional de España is the national state-owned public service radio broadcaster in Spain. RNE is the radio division and Televisión Española (TVE) is the television division of Radiotelevisión Española (RTVE).

RNE currently has six themed radio channels with Radio Exterior broadcasting on shortwave (see below)

International broadcasting on shortwave

Radio Exterior de España

Radio Exterior de España is the international radio service operated by Radio Nacional de España. REE is primarily intended for Spaniards living abroad with limited content in Arabic, English, French, Ladino, Portuguese and Russian.

Transmitter site: Noblejas, a municipality located in the province of Toledo, Castilla-La Mancha.

RNE schedules for weekdays and weekends are as follows:

Weekdays

Time/UTC	Days	Language	kHz	kW	Beamed to
1500-1630	Mon-Fri	Spanish	15390	200	Western Africa and South Atlantic
			15520	200	Middle East and Indian Ocean
1630-1700	Mon-Fri	Arabic	15390	200	Western Africa and South Atlantic
			15520	200	Middle East and Indian Ocean
1700-1730	Mon-Fri	Portuguese	15390	200	Western Africa and South Atlantic
1700-1730	Mon/Wed/Fri	Russian	15520	200	Middle East and Indian Ocean
1700-1730	Tue	Ladino	15520	200	Middle East and Indian Ocean
1700-1730	Thu	Spanish	15520	200	Middle East and Indian Ocean
1730-1800	Mon-Fri	Spanish	15390	200	Western Africa and South Atlantic
			15520	200	Middle East and Indian Ocean
			17715	200	South America
1800-2100	Mon-Fri	Spanish	15390	200	Western Africa and South Atlantic
			15520	200	Middle East and Indian Ocean
			17855	200	North America
2100-2130	Mon/Wed/Fri	Russian	15520	200	Middle East and Indian Ocean
2100-2130	Tue/Thu	Spanish	15390	200	Western Africa and South Atlantic
			17715	200	South America
			17855	200	North America
2130-2200	Mon-Fri	Arabic	15390	200	Western Africa and South Atlantic
			15520	200	Middle East and Indian Ocean
2200-2230	Mon/Wed/Fri	English	15390	200	Western Africa and South Atlantic
			15520	200	Middle East and Indian Ocean
			17715	200	South America
2200-2230	Tue	Ladino	15390	200	Western Africa and South Atlantic
			15520	200	Middle East and Indian Ocean
			17715	200	South America
2200-2230	Thu	Spanish	15390	200	Western Africa and South Atlantic
			15520	200	Middle East and Indian Ocean
			17715	200	South America
2230-2300	Mon/Wed/Fri	French	15390	200	Western Africa and south Atlantic
			15520	200	Middle East and Indian Ocean
			17715	200	South America
2230-2300	Tue	Spanish	15390	200	Western Africa and South Atlantic
			15520	200	Middle East and Indian Ocean
			17715	200	South America
2230-2300	Thu	Spanish	15390	200	Western Africa and South Atlantic
			15520	200	Middle East and Indian Ocean
			17715	200	South America
2300-2330	Mon-Fri	Portuguese	17715	200	South America
			17855	200	North America
2330-0200	Mon-Fri	Spanish	17715	200	South America
			17855	200	North America
			17855	200	North America

Weekends						
Time/UTC	Days	Language	kHz	kW	Beamed to	
1400-2130	Sat/Sun	Spanish	15390	200	Western Africa and South Atlantic	
			15520	200	Middle East and Indian Ocean	
			17715	200	South America	
			17855	200	North America	
2130-2200	Sat	Spanish	15390	200	Western Africa and South Atlantic	
			15520	200	Middle East and Indian Ocean	
			17715	200	South America	
			17855	200	North America	
2130-2200	Sun	Ladino	15390	200	Western Africa and South Atlantic	
			15520	200	Middle East and Indian Ocean	
			17715	200	South America	
			17855	200	North America	

RNE programmes that form part of the WRN Russian stream that is re-broadcast on shortwave

Time/UTC	Days	Language	kHz	Transmitter site	kW	Beamed to
1500-1530	Tue/Thu/Sat	Russian	13650	Dhabbaya, UAE	250	Eastern Europe

Private radio stations on shortwave

Radio Mi Amigo International

Radio Mi Amigo International is a Spanish-based Internet radio station that also broadcasts on shortwave during the daytime. It's mission is to bring back "the Golden Era of Offshore AM Radio".

Transmitter site: Radio Mi Amigo International uses the facilities of Shortwaveservice, Kall, Krekel, Germany

Time/UTC	Days	Language	kHz	kW	Target area
0700-1700	Daily	English/Dutch/French/German	6085	20	Europe

Sweden

Sveriges Radio

SR is Sweden's national publicly funded radio broadcaster. Sveriges Radio is a public limited company, owned by an independent foundation, and funded through a licensing fee, the level of which is decided by the Swedish Riksdag. Four radio channels are available nationwide on FM and digital radio. Radio Sweden discontinued shortwave broadcasting on 30 October 2010.

International broadcasting on shortwave

IBRA Media

IBRA stands for International Broadcasting Association and is IBRA Media is part of the Pentecostal Movement in the Nordic countries. Shortwave broadcasts are brokered by Encompass.

Time/UTC	Days	Language	kHz	Transmitter site	kW	Target area	Notes
0000-0030	Daily	Bengali	11590	Tashkent, Uzbekistan	100	South Asia	Radio Ibrahim
0230-0300	Daily	Dari	9895	Dhabbaya, UAE	250	Afghanistan	Radio Sadaye Zindagi
0830-1030	Daily	Dari	17865	Dhabbaya, UAE	250	West Asia	Radio Sadaye Zindagi
1455-1755	Daily	various	5130	Bishkek, Kyrgyzstan	15	Afgh./C Asia	various prgrs
1500-1530	Daily	Bengali	11590	Tashkent, Uzbekistan	100	South Asia	Radio Ibrahim
1500-1545	Daily	Pashto	9720	Dhabbaya, UAE	250	Afghanistan	Pashto Radio
1600-1630	Daily	Afar	11655	Dhabbaya, UAE	250	Horn of Africa	Radio Ibrahim
1615-1630	Mon-Wed	Guragena	9540	Dhabbaya UAE	250	Horn of Africa	Radio Ibrahim
1615-1630	Thu-Sun	Amharic	9540	Dhabbaya UAE	250	Horn of Africa	Radio Ibrahim
1630-1700	Daily	Amharic	9540	Dhabbaya, UAE	250	Horn of Africa	Radio Ibrahim
1700-1730	Daily	Oromo	9630	Dhabbaya, UAE	250	Horn of Africa	Radio Ibrahim
1700-1800	Daily	Arabic	15260	Woofferton, UK	250	Middle East	Radio Sama
1730-1800	Daily	Silt'e	9645	Dhabbaya, UAE	250	Sudan	Radio Ibrahim
1730-1800	Daily	Tigrinya	9630	Dhabbaya, UAE	250	Horn of Africa	Radio Ibrahim
1730-1900	Daily	Arabic	17670	Woofferton, UK	250	North-East Africa	Radio Sama

Switzerland

Schweizerische Radio und Fernsehgesellschaft (SRG)

Schweizerische Radio und Fernsehgesellschaft (SRG; English: Swiss Broadcasting Corporation) is the Swiss public broadcasting association, comprising of the German language "Schweizer Radio und Fernsehen" (SRF), French language "Radio Télévision Suisse" (RTS), Italian language "Radiotelevisione Svizzera di lingua Italiana" (RSI) and Romansh "Radiotelevision Svizra Rumantscha" (RTR)

International broadcasting on shortwave

Schweizer Radio und Fernsehen (SRF)

SRF has a daily broadcast in German over ShortwaveService.

<i>Time/UTC</i>	<i>Days</i>	<i>Language</i>	<i>Programme</i>	<i>kHz</i>	<i>Transmitter site</i>	<i>kW</i>	<i>Target area</i>
1600-1700	Daily	German	SRF - Echo der Zeit	3985	Kall, Krekel, Germany	1	Europe

C M Obrecht Shortwave Radio

"C. M. Obrecht shortwave radio" is an officially registered Swiss private radio station. Claudius Matthias Obrecht is a Swiss musician. As well as programmes on Channel 292, Claudius occasionally has special broadcasts of his own music on shortwave, which include some in DRM to different parts of the world.

Further details of forthcoming broadcasts can be found at <https://cmobrecht.jimdofree.com/shortwave-radio/>

Ukraine

Ukrainian Radio

Ukrainian Radio is the publicly funded radio broadcaster in Ukraine. In 2017 it was merged with the national TV company into the country's public broadcaster, Suspilne. Until the creation of the National Public Broadcasting Company of Ukraine, the National Radio Company of Ukraine was an independent company. The Ukrainian Radio Directorate of the Suspilne is a structural subdivision of the company, which integrates five broadcasting channels, the studios of Radio House and the Recording House of Ukrainian Radio, and five radio ensembles.

Radio Ukraine International

Radio Ukraine International, abbreviated RUI, is the official international broadcasting station of Ukraine, with foreign language news and programming being produced by Ukrainian Radio's main editorial department. The Ukrainian language programming aired on RUI is produced by the domestic First Channel.

RUI provides listeners with up-to-date information about the Russian-Ukrainian war in the form of short podcasts called "Ukraine: Security Issue" (as prepared by Ukrainian Radio). These are presented as a digest of the most important news of the day in Belarusian, Bulgarian, Hungarian, Polish, Romanian, Slovak and Ukrainian (note that Alex Miatloikov confirmed on 22 November 2023 that the edition in English has been cancelled).

Although there are currently no broadcasts on shortwave from Ukraine itself, there had been relays of Radio Ukraine International by Radio Miami International (WRMI) in Florida, USA.

Many thanks to Alex Miatlikov for his help and guidance with the entry for Ukraine.

United Kingdom

British Broadcasting Corporation

The British Broadcasting Corporation (BBC) is a British public service broadcaster.

International broadcasting on shortwave

BBC World Service

The BBC World Service is an international broadcaster owned and operated by the BBC. It is the world's largest external broadcaster in terms of reception area, language selection and audience reach. It broadcasts radio news, speech and discussions in more than 40 languages to many parts of the world. It was funded for decades by grant-in-aid through the Foreign and Commonwealth Office until 1 April 2014. Since then it has been funded by a mixture of the UK's TV licence fee, limited advertising profits of BBC Studios, and Foreign, Commonwealth and Development Office funding.

BBC World Service A24 shortwave schedule

<i>Time/UTC</i>	<i>Days</i>	<i>Language</i>	<i>kHz</i>	<i>Transmitter site</i>	<i>kW</i>	<i>Target area</i>
0000-0200	Daily	English	9510	Tashkent, Uzbekistan	100	South Asia
			9895	Tashkent, Uzbekistan	100	South Asia
			12095	A'Seela, Oman	250	South Asia
0030-0100	Daily	Dari	6195	A'Seela, Oman	250	Afghanistan
			7295	SMG, Vatican	250	Afghanistan
			6195	A'Seela, Oman	250	Afghanistan
0100-0130	Daily	Pashto	7445	A'Seela, Oman	250	Afghanistan
			6195	A'Seela, Oman	250	Afghanistan
0130-0200	Daily	Dari	7445	A'Seela, Oman	250	Afghanistan
			6195	A'Seela, Oman	250	Afghanistan
0200-0230	Daily	Pashto	9410	A'Seela, Oman	250	Afghanistan
			12095	A'Seela, Oman	250	Afghanistan

0230-0300	Daily	Dari	9410	A'Seela, Oman	250	Afghanistan
			12095	A'Seela, Oman	250	Afghanistan
0300-0330	Daily	Pashto	12095	A'Seela, Oman	250	Afghanistan
			13850	Dhabbaya, UAE	250	Afghanistan
0400-0430	Daily	Somali	13810	Talata V., Madagascar	250	Horn of Africa
			17745	Dhabbaya, UAE	250	Horn of Africa
0400-0500	Daily	English	12095	Talata V., Madagascar	250	East Africa
0430-0500	Daily	Dari	15310	A'Seela, Oman	250	Afghanistan
			17750	A'Seela, Oman	250	Afghanistan
0500-0530	Daily	Pashto	15310	A'Seela, Oman	250	Afghanistan
			17750	A'Seela, Oman	250	Afghanistan
0500-0600	Daily	English	9410	Ascension Island	125	West Africa
			15490	Woofferton, UK	250	Central Africa
			21560	Dhabbaya, UAE	250	East Africa
0500-0600	Sat	Rwanda-Rundi	17815	SMG, Vatican	250	East Africa
			21660	Dhabbaya, UAE	250	East Africa
0529-0600	Daily	Hausa	7410	Ascension Island	125	West Africa
			9440	Ascension Island	125	West Africa
0529-0600	Sun	Rwanda-Rundi	17815	SMG, Vatican	250	East Africa
			21660	Dhabbaya, UAE	250	East Africa
0600-0629	Daily	French	7410	Ascension Island	125	West Africa
			12065	Ascension Island	125	Central Africa
			13810	Woofferton, UK	125	North Africa
0600-0630	Mon-Fri	English	9700	Rangitaiki, New Zealand	50	Pacific (Newsday on RNZ Pacific)
0600-0700	Daily	English	9410	Ascension Island	125	West Africa
			9915	Ascension Island	125	Central Africa
0629-0700	Daily	Hausa	9440	Ascension Island	125	West Africa
			12065	Ascension Island	125	West Africa
0700-0729	Daily	French	15260	Ascension Island	125	West Africa
			17830	Ascension Island	250	Central Africa
0830-0900	Daily	Dari	17810	A'Seela, Oman	250	Afghanistan
			21470	A'Seela, Oman	250	Afghanistan
0900-0930	Daily	Pashto	17810	A'Seela, Oman	250	Afghanistan
			21470	A'Seela, Oman	250	Afghanistan
0930-1000	Daily	Dari	17810	A'Seela, Oman	250	Afghanistan
			21470	A'Seela, Oman	250	Afghanistan
1000-1030	Daily	Pashto	17810	A'Seela, Oman	250	Afghanistan
			21470	A'Seela, Oman	250	Afghanistan
1000-1200	Daily	English	9410	Tinang, Philippines	250	South-East Asia
1030-1100	Daily	Dari	17810	A'Seela, Oman	250	Afghanistan
			21470	A'Seela, Oman	250	Afghanistan
1100-1130	Daily	Pashto	17810	A'Seela, Oman	250	Afghanistan
			21470	A'Seela, Oman	250	Afghanistan
1100-1700	Sat/Sun	Somali	17745	Dhabbaya, UAE	250	Horn of Africa
1100-1430	Sat	Hausa	21630	Ascension Island	250	West Africa
1200-1230	Daily	French	17535	SMG, Vatican	250	North Africa
			17640	Ascension Island	250	West Africa
			25900	Talata V., Madagascar	250	Central Africa
1200-1300	Daily	English	13855	Tashkent, Uzbekistan	100	South Asia
			15295	A'Seela, Oman	250	South Asia
			17790	A'Seela, Oman	250	South Asia
1230-1300	Mon-Fri	Korean	5875	Tinang, Philippines	250	Korea
			7530	Tinang, Philippines	250	Korea
1300-1400	Daily	English	11870	A'Seela, Oman	250	South Asia
			13855	Tashkent, Uzbekistan	100	South Asia
			15295	A'Seela, Oman	250	South Asia
1300-1630	Sat	Hausa	21645	Ascension Island	250	West Africa
1330-1400	Daily	Burmese	15325	Tinang, Philippines	250	South-East Asia
			17515	Dhabbaya, UAE	250	South-East Asia
1400-1430	Mon-Fri	Hausa	21630	Ascension Island	250	West Africa
			25700	SMG, Vatican	250	West Africa
1400-1500	Daily	Dari	5970	A'Seela, Oman	250	Afghanistan
			11995	A'Seela, Oman	250	Afghanistan
1400-1500	Mon-Fri	Somali	12095	A'Seela, Oman	250	Horn of Africa
			17745	Dhabbaya, UAE	250	Horn of Africa
1400-1600	Sat	English	15310	A'Seela, Oman	250	East Africa
			17640	Ascension Island	125	West Africa

1500-1600	Daily	Pashto	21470	Dhabbaya, UAE	250	Central Africa
			5970	A'Seela, Oman	250	Afghanistan
			11995	A'Seela, Oman	250	Afghanistan
1500-1700	Mon-Fri	English	12095	A'Seela, Oman	250	East Africa
1500-1630	Sun	Somali	17745	Talata V., Madagascar	250	Horn of Africa
1530-1600	Mon-Fri	Korean	7355	Tinang, Philippines	250	Korea
			9390	Dushanbe, Tajikistan	250	Korea
1530-1730	Sun	English	12095	A'Seela, Oman	250	East Africa
			17640	Ascension Island	125	West Africa
			21470	SMG, Vatican	250	Central Africa
1600-1630	Daily	Dari	5970	A'Seela, Oman	250	Afghanistan
			11995	A'Seela, Oman	250	Afghanistan
1600-1900	Sat	Hausa	17700	Ascension Island	250	West Africa
1630-1700	Mon-Fri	Korean	7355	Tinang, Philippines	250	North Korea
			9390	Dushanbe, Tajikistan	250	North Korea
1630-1700	Mon-Fri	Pashto	5970	A'Seela, Oman	250	Afghanistan
			11995	A'Seela, Oman	250	Afghanistan
1630-1700	Sat/Sun	Dari	5970	A'Seela, Oman	250	Afghanistan
			11995	A'Seela, Oman	250	Afghanistan
1630-1700	Mon-Fri	Rwanda-Rundi	13740	Dhabbaya, UAE	250	East Africa
			17745	Talata V., Madagascar	250	East Africa
1630-1800	Sun	Somali	17745	Talata V., Madagascar	250	Horn of Africa
1700-1800	Daily	English	17780	Ascension Island	125	West Africa
			17830	Ascension Island	125	West Africa
1700-1800	Daily	Dari	6150	A'Seela, Oman	250	Afghanistan
			9550	A'Seela, Oman	250	Afghanistan
1700-1800	Sat	Russian	13650	Dhabbaya, UAE	250	Russia (Encompass WRN Russian)
1700-1900	Sat/Sun	Somali	17745	A'Seela, Oman	250	Horn of Africa
1730-1750	Mon-Fri	Amharic	9780	A'Seela, Oman	250	Horn of Africa
			15685	SMG, Vatican City	250	Horn of Africa
1730-1800	Mon-Fri	Korean	7355	Tinang, Philippines	250	Korea
			9390	Dushanbe, Tajikistan	250	Korea
1750-1810	Mon-Fri	Oromo	9780	A'Seela, Oman	250	Horn of Africa
			15685	SMG, Vatican City	250	Horn of Africa
1800-1830	Daily	French	9750	SMG, Vatican City	250	Indian Ocean Islands
			11875	SMG, Vatican City	100	North Africa
			13630	Talata V., Madagascar	250	Central Africa
			15490	Ascension Island	125	West Africa
1800-1900	Daily	English	15400	Ascension Island	125	West Africa
			17780	Ascension Island	125	Central Africa
1800-1900	Daily	Pashto	6150	A'Seela, Oman	250	Afghanistan
			9550	A'Seela, Oman	250	Afghanistan
1810-1830	Mon-Fri	Tigrinya	9780	A'Seela, Oman	250	Horn of Africa
			15685	SMG, Vatican City	250	Horn of Africa
1830-1850	Mon-Fri	Amharic	9780	A'Seela, Oman	250	Horn of Africa
			12095	SMG, Vatican City	250	Horn of Africa
1850-1910	Mon-Fri	Oromo	9780	A'Seela, Oman	250	Horn of Africa
			12095	SMG, Vatican City	250	Horn of Africa
1910-1930	Mon-Fri	Tigrinya	9780	A'Seela, Oman	250	Horn of Africa
			12095	SMG, Vatican City	250	Horn of Africa
1930-2000	Sat-Thu	Hausa	11660	Ascension Island	125	West Africa
			17640	Woofferton, UK	125	West Africa
1930-2030	Fri	Hausa	11660	Ascension Island	125	West Africa
			17640	Woofferton, UK	250	West Africa
2200-2300	Daily	English	9440	Tinang, Philippines	250	South-East Asia
2300-0000	Daily	English	11645	Tinang, Philippines	250	South-East Asia

BBC World Service DRM transmissions

0559-0700	Daily	English	3955	Woofferton, UK	100	Europe (DRM)
1500-1600	Daily	English	21540	Woofferton, UK	100	South Asia (DRM)

BBC World Service programmes for A24

Alan Roe has compiled an excellent programme schedule for the BBC World Service for A24. Alan writes: "The BBC World Service "six-month" schedules now seem to have been deleted permanently from the BBCWS website. I have therefore produced my own "at-a-glance" schedule listing the BBC WS English programmes on shortwave. It does highlight how reduced their shortwave service is now". The latest edition has been uploaded to the DX Library page on dxguides.info (many thanks to Alan for this invaluable piece of work).

BBC World Service Antarctic Midwinter Broadcast

Every year, the BBC World Service makes a special programme for just a small number of listeners: the team of scientists and support staff isolated at British research stations in the Antarctic midwinter. The Antarctic Midwinter Broadcast features messages from family and friends at home as well as music requests from Antarctica. The next broadcast will be on 21 June 2025 at 2130-2200 (with a test likely the week before on 14 June 2025)

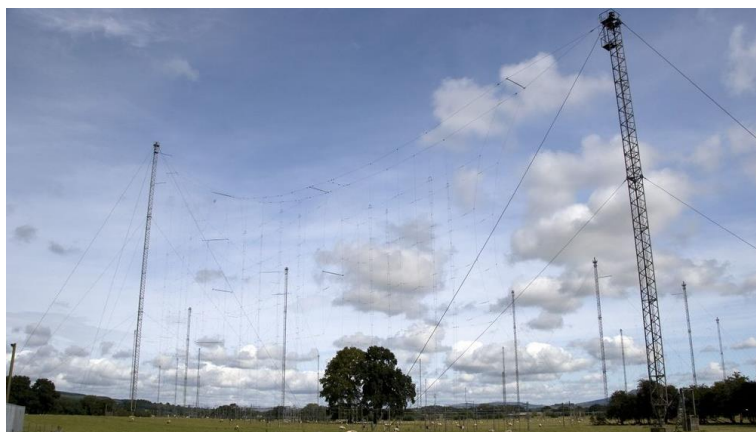
Encompass Digital Media

From the Encompass website: "Encompass is a managed services company focused on supporting broadcasters (television and radio), cable networks, sports leagues and OTT platforms. They design, implement and operate reliable video and radio solutions that capture, process and deliver their clients' content from any source, in any format, to any destination in the most efficient manner possible". Encompass own and operate the Woofferton transmitter site and also own the World Radio Network, both of which are active on shortwave (see below).

Shortwave relays from the Encompass transmitting station at Woofferton

The Woofferton transmitting station is owned and operated by Encompass Digital Media, as one of the BBC's assets which were handed over as part of the privatisation of World Service distribution and transmission in 1997. It is the last remaining UK shortwave broadcasting site, located at Woofferton, south of Ludlow, Shropshire, England. The large site spreads across into neighbouring Herefordshire. The station was originally built by the BBC during World War II to house additional shortwave broadcasting transmitters. When it officially started broadcasting on 17 October 1943 it had six 50 kW RCA transmitters, obtained by lend-lease. The site has been modernised many times over the years and is now DRM (Digital Radio Mondiale) capable providing daily digital radio programmes. (Wikipedia)

Time/UTC	Days	Station	Language	kHz	kW	Target area
0400-0500	Daily	Voice of America	English	7375	250	Central Africa
0459-0600	Daily	BBC	English	5875	100	Europe (DRM)
0500-0600	Daily	BBC	English	15490	250	Central Africa
0600-0629	Daily	BBC	French	13810	250	North Africa
0600-0700	Daily	Radio Ndarason Int	Kanuri	15505	250	Lake Chad Basin
0700-0800	Daily	KBS World Radio	Korean	13610	250	Europe
1500-1600	Daily	BBC	English	21540	100	South Asia (DRM)
1530-1600	Mon-Fri	Voice of America	Hausa	17700	250	West Africa
1630-1700	Daily	Voice of America	Swahili	17530	250	East Africa
1700-1730	Mon-Fri	Voice of America	Amharic	11610	250	Horn of Africa
1700-1800	Daily	Voice of America	English	15140	250	Africa
1700-1800	Daily	IBRA Media	Arabic	15260	250	Arab World
1730-1800	Mon-Fri	Voice of America	Oromo	11610	250	Horn of Africa
1730-1900	Daily	IBRA Media	Arabic	17670	250	Arab World
1800-1900	Daily	Voice of America	Amharic	11610	250	Horn of Africa
				15660	250	Horn of Africa
1800-1900	Daily	KBS World Radio	Russian	15265	250	Western Russia
1900-1930	Daily	Voice of America	Tigrinya	11610	250	Horn of Africa
1900-2000	Daily	KBS World Radio	French	6145	250	Africa
1900-2100	Daily	Radio Ndarason Int	Kanuri	12050	250	Lake Chad Basin
1900-2000	Sat/Sun	Yoruba Nation Radio	Yoruba/English	17735	250	West Africa
1930-2000	Sat-Thu	BBC	Hausa	17640	125	West Africa
1930-2030	Fri	BBC	Hausa	17640	125	West Africa
2000-2030	Sun	Follow the Bible Ministries	Arabic	7230	300	North Africa
2000-2100	Daily	KBS World Radio	German	3955	250	Europe
2000-2100	Daily	KBS World Radio	Arabic	6090	250	North Africa
2100-2115	Mon-Sat	Radio Akhbar Mufriha	Arabic	7300	300	North Africa
2115-2145	Sun	Radio Akhbar Mufriha	Arabic	7300	300	North Africa



World Radio Network (part of Encompass Digital Media)

WRN is part of Encompass Digital Media and operates channels in English, Russian, Arabic, and Persian. The English channel operates different programming schedules for Europe, North America and listeners in Africa and Asia. Some programmes from these streams are also aired on shortwave:

WRN North America stream

Some of these programmes in English are aired over WRMI (Radio Miami International) on shortwave.

Time/UTC	Days	Station	Transmitter site	kW	Target
0200-0300	Tue-Sat	KBS World Radio	WRMI 10 Okeechobee FL	5800	Latin America
0915-1000	Mon-Sat	RTÉ Good Morning Ireland	WRMI 5 Okeechobee FL	9455	Western North America
1100-1130	Tue/Wed	NHK World Radio	WRMI 9 Okeechobee FL	15770	Europe
1130-1145	Tue/Wed	Radio Slovakia International	WRMI 9 Okeechobee FL	15770	Europe

These WRN broadcasts may be discontinued and replaced with other programming by WRMI at any time.

WRN Russian

Russian programmes relayed via Dhabbaya commenced on 29 October 2023 in a slot between 1500-1700 UTC that has been registered by Encompass for a broadcast of the WRN Russian channel.

Time/UTC	Days	Programme	Language	kHz	Transmitter site	kW
1500-1530	Daily	schedule as below	Russian	13650	Dhabbaya, UAE	250
	Mon	Special programme				
	Tue	Radio Exterior de España				
	Wed	Radio Prague International				
	Thu	Radio Exterior de España				
	Fri	Special programme				
	Sat	Radio Exterior de España				
	Sun	On subject				
1530-1600	Daily	schedule as below	Russian	13650	Dhabbaya, UAE	250
	Mon	Bolt				
	Tue	Kaleidoscope				
	Wed	Kaleidoscope				
	Thu	Kaleidoscope				
	Fri	Figure of speech				
	Sat	Radio Panorama				
	Sun	UN Review				
1600-1620	Daily	NHK World Japan	Russian	13650	Dhabbaya, UAE	250
1620-1630	Daily	There's Time to Tell	Russian	13650	Dhabbaya, UAE	250
1630-1700	Daily	Radio Slovakia International	Russian	13650	Dhabbaya, UAE	250
1700-1800	Sat	BBC Russian	Russian	13650	Dhabbaya, UAE	250

Since 3 August 2024, Encompass has extended its relay of WRN Russian on 13650 kHz by one hour on Saturdays only until 1800 UTC. Alex Miatlikov confirms that there are now two podcasts at this time - a Friday edition of their regular news-based podcast and a literary podcast from archive, so the entire hour is usually filled with BBC.

Many thanks to Alex Miatlikov for keeping this schedule up-to-date

Feba Radio

Feba Radio is a British-founded broadcasting network. It is driven by Christian values rather than by government or commercial aims. It was established in 1959 in the UK as the Far Eastern Broadcasting Associates.

Feba Radio (to Ethiopia)

Time/UTC	Days	Language	kHz	Transmitter site	kW	Target area
1800-1830	Sat/Sun	Tigrinya	6035	Dhabbaya UAE	250	Horn of Africa

Feba Pakistan (to Pakistan)

Time/UTC	Days	Language	kHz	Transmitter site	kW	Target area
0200-0215	Mon	Punjabi/Urdu	9540	Dhabbaya, UAE	250	South Asia
0200-0215	Tue	Sindhi/Punjabi	9540	Dhabbaya, UAE	250	South Asia
0200-0230	We/Th/Sa/Su	Urdu	9540	Dhabbaya, UAE	250	South Asia
0200-0245	Fri	Pashto	9540	Dhabbaya, UAE	250	South Asia
0215-0230	Mon	Saraiki/Urdu	9540	Dhabbaya, UAE	250	South Asia
0215-0230	Tue	Patwari/Saraiki	9540	Dhabbaya, UAE	250	South Asia
0245-0300	Fri	Urdu	9540	Dhabbaya, UAE	250	South Asia

Feba India (to India/South Asia)

Time/UTC	Days	Language	kHz	Transmitter site	kW	Target area
0230-0300	Daily	Dari	9895	Dhabbaya, UAE	250	South Asia (via IBRA)
1200-1230	Sun-Tue	Tibetan	15215	Dhabbaya, UAE	250	South Asia
1430-1500	Wed-Sun	Hindi	13660	Tashkent, Uzbekistan	100	South Asia
1430-1500	Daily	Urdu	15440	Talata V., Madagascar	250	South Asia (via TWR Asia)

Volant Media UK Ltd

Volant Media UK Ltd was founded in 2017 and is a global organisation with offices in London, Paris and Washington and has a rapidly growing team of journalists and content producers. The two services of Volant Media UK Ltd of interest to shortwave listeners have been Radio Iran International and Radio Afghanistan International, but since April 2024 both appear to be missing on shortwave. The schedules were:

Radio Iran International: 0330-1530 on 15630 kHz and 1530-0330 on 5830 kHz both via Uzbekistan

Radio Afghanistan International: 0100-1600 on 7600 kHz via Uzbekistan and 1600-0100 on 7600 kHz via Armenia.

Other notable British produced programmes on shortwave

Encore - Classical Music on Radio Tumbriil

Encore is a weekly classical music programme produced by Brice Avory. Regular Broadcast times are:

Days	Time/UTC	kHz	Target area
Friday:	0200-0300	5850	WRMI to US
	2000-2100	15770	WRMI to Europe
Saturday:	1000-1100	9670	Channel 292 to Europe
Sunday:	0100-0200	5850	WRMI to US & Canada
	1900-2000	3955	Channel 292 to Europe
Monday:	0200-0300	5950	WRMI to the US and Canada
Tuesday	1300-1400	15770	WRMI to Europe, East Coast of US and Iceland (more details at www.tumbriil.co.uk)

Grooveline

The Grooveline Series: A 60 minute monthly show showcasing the icons, labels and moments that have shaped soul, funk and house, hosted by Stephen Howie and broadcast across Europe and beyond on Channel 292 on 6070 kHz on the first Sunday of every month at 1300. More details at www.groovelineonline.com/

Radio Emma Toc World Service

The 'Radio Emma Toc World Service' is a programme produced by Jim Salmon available on various broadcast stations & online. Check the station's website at <https://sites.google.com/view/jimsradiosite> for details of the station's history and forthcoming broadcasts.

Radio Six International

On 6th June 1963, four schoolchildren gathered in the attic of a house on the Ardrossan seafront in Ayrshire to launch their very own radio station. Cobbled together with tins, clockwork gramophones, and lots of wire, the opening day's programmes were line fed to a radio receiver two floors down. But it was a start and, against the odds, the station survived in a variety of forms and today can be heard 24/7 on the internet. The station is now based in a purpose-built headquarters on the Inner Hebridean island of Lismore, a tiny island sandwiched between Oban on the mainland and the much bigger island of Mull to the west. More details at <https://www.facebook.com/radiosixinternational/>

Vatican City State

Vatican Radio

Vatican Radio is the broadcasting service of the Vatican City State.

International broadcasting on shortwave

Shortwave transmissions from Vatican Radio have been reduced in recent years in favour of digital distribution but there are still a number of broadcasts mainly to Africa and Asia.

Transmitter sites: Vatican Radio's transmitting station is located at Santa Maria di Galeria, an extraterritorial area near Cesano (to the north of Rome) belonging to the Holy See. Additional relays are via Germany, Madagascar, Philippines, Northern Mariana Islands and the USA

Time/UTC	Days	Language	kHz	Transmitter site	kW	Target area
0100-0130	Daily	Portuguese	7305	Greenville NC, USA	250	South America
0130-0200	Daily	Spanish	7305	Greenville NC, USA	250	Central America
0440-0500	Daily	Ukrainian	9710	Santa Maria di Galeria, Vatican	250	Eastern Europe
			11815	Santa Maria di Galeria, Vatican	250	Eastern Europe
0500-0520	Daily	Russian	9710	Santa Maria di Galeria, Vatican	250	Russia/E Europe
			11815	Santa Maria di Galeria, Vatican	250	Russia/E Europe
0500-0600	Daily	Italian (Mass)	15595	Santa Maria di Galeria, Vatican	250	Eastern Mediterranean
0600-0610	Mon-Sat	Italian	15595	Santa Maria di Galeria, Vatican	250	Middle East
0605-0700	Sun	Ukrainian (Lit)	9710	Santa Maria di Galeria, Vatican	250	Eastern Europe
			11815	Santa Maria di Galeria, Vatican	250	Eastern Europe
0610-0630	Mon-Sat	Arabic	15595	Santa Maria di Galeria, Vatican	250	Middle East
0630-0645	Mon-Fri	French	15595	Santa Maria di Galeria, Vatican	250	Middle East
0630-0645	Sat	English	15595	Santa Maria di Galeria, Vatican	250	Middle East

0700-0930	Special	Portuguese	17760	Santa Maria di Galeria, Vatican	250	Southern Africa
0700-0930	Special	English	17540	Santa Maria di Galeria, Vatican	250	West Africa
0700-0930	Special	French	17555	Santa Maria di Galeria, Vatican	250	West Africa
0700-0930	Special	Arabic	17715	Santa Maria di Galeria, Vatican	250	Middle East
0710-0820	Sun	Romanian (Lit)	7250	Santa Maria di Galeria, Vatican	250	Eastern Europe
			9710	Santa Maria di Galeria, Vatican	250	Eastern Europe
0830-0950	Sun I	Amharic	15595	Santa Maria di Galeria, Vatican	250	Horn of Africa
			17790	Talata Volonondry, Madagascar	250	Horn of Africa
0830-0950	Sun II/IV	Russian	15595	Santa Maria di Galeria, Vatican	250	Russia/E Europe
			17790	Santa Maria di Galeria, Vatican	250	Russia/E Europe
0830-0950	Sun III	Armenian	15595	Santa Maria di Galeria, Vatican	250	Caucasus
			17790	Santa Maria di Galeria, Vatican	250	Caucasus
0830-0950	Sun V	Arabic	15595	Santa Maria di Galeria, Vatican	250	Middle East
			17790	Santa Maria di Galeria, Vatican	250	Middle East
1130-1145	Daily	Spanish	7305	Greenville NC, USA	250	Central America
1130-1200	Fri	English (Lit)	15595	Santa Maria di Galeria, Vatican	250	Middle East
			17790	Santa Maria di Galeria, Vatican	250	West Asia
1230-1250	Daily	Russian	9810	Tinang, Philippines	250	Russia (Siberia)
			11805	Tinang, Philippines	250	Russia (Siberia)
1230-1315	Sat	Chinese	7490	Tinang, Philippines	250	East Asia
			9720	Tinang, Philippines	250	East Asia
			11750	Tinang, Philippines	250	East Asia
1430-1450	Daily	Hindi	11700	Tinang, Philippines	250	South Asia
			15490	Tinang, Philippines	250	South Asia
1450-1510	Daily	Tamil	11700	Tinang, Philippines	250	South Asia
			15490	Tinang, Philippines	250	South Asia
1510-1530	Daily	Malayalam	11700	Tinang, Philippines	250	South Asia
			15490	Tinang, Philippines	250	South Asia
1530-1600	Daily	Amharic	13830	Santa Maria di Galeria, Vatican	250	Horn of Africa
			15565	Santa Maria di Galeria, Vatican	250	Horn of Africa
1530-1600	Daily	Arabic	15595	Santa Maria di Galeria, Vatican	100	Middle East
			17790	Santa Maria di Galeria, Vatican	100	Middle East
1600-1615	Sat	Swahili	13830	T. Volonondry, Madagascar	250	East Africa
			15565	Santa Maria di Galeria, Vatican	250	East Africa
1600-1620	Daily	Armenian	9710	Santa Maria di Galeria, Vatican	250	Caucasus
			11815	Santa Maria di Galeria, Vatican	250	Caucasus
1600-1630	Sun-Fri	Swahili	13830	T. Volonondry, Madagascar	250	East Africa
			15565	Santa Maria di Galeria, Vatican	250	East Africa
1600-1615	Daily	French	15595	Santa Maria di Galeria, Vatican	250	Middle East
1615-1630	Daily	English	15595	Santa Maria di Galeria, Vatican	250	Middle East
1615-1630	Sat	Somali	13830	T. Volonondry, Madgascar	250	Horn of Africa
			15565	Santa Maria di Galeria, Vatican	250	Horn of Africa
1620-1640	Daily	Russian	9710	Santa Maria di Galeria, Vatican	250	Russia
			11815	Santa Maria di Galeria, Vatican	250	Russia
1630-1700	Daily	English	13830	T. Volonondry, Madagascar	250	Southern Africa
			15565	Santa Maria di Galeria, Vatican	250	East Africa
1640-1700	Daily	Ukrainian	9710	Santa Maria di Galeria, Vatican	250	Eastern Europe
			11815	Santa Maria di Galeria, Vatican	250	Eastern Europe
1700-1720	Daily	Belarusian	9710	Santa Maria di Galeria, Vatican	250	Eastern Europe
1700-1730	Daily	French	13830	Santa Maria di Galeria, Vatican	250	Central Africa
			15565	Santa Maria di Galeria, Vatican	250	Central Africa
1730-1800	Daily	Tigrinya	13830	Santa Maria di Galeria, Vatican	250	Horn of Africa
			15565	Santa Maria di Galeria, Vatican	250	Horn of Africa
1800-1830	Daily	Portuguese	15565	Santa Maria di Galeria, Vatican	250	Southern Africa
1840-1900	Daily	Latin (Lit)	11870	Santa Maria di Galeria, Vatican	250	Central Africa
			13830	Santa Maria di Galeria, Vatican	250	West Africa
			15595	Santa Maria di Galeria, Vatican	250	Middle East
2000-2030	Daily	English	9705	Santa Maria di Galeria, Vatican	250	West Africa
			11870	Santa Maria di Galeria, Vatican	250	Central Africa
2030-2100	Daily	French	9705	Santa Maria di Galeria, Vatican	250	West Africa
			11870	Santa Maria di Galeria, Vatican	250	Central Africa
2100-2130	Daily	Portuguese	11870	Santa Maria di Galeria, Vatican	250	West Africa
2200-2230	Daily	Chinese	7410	Santa Maria di Galeria, Vatican	250	East Asia
			9695	Tinang, Philippines	250	East Asia
			11895	Tinang, Philippines	250	East Asia
2315-0000	Daily	Vietnamese	9580	Tinang, Philippines	250	South-East Asia
			11895	Tinang, Philippines	250	South-East Asia

Santa Maria di Galeria Transmitting Station

Vatican Radio's transmitting station is located at Santa Maria di Galeria, an extraterritorial area near Cesano (to the north of Rome) belonging to the Holy See.

Transmitters: 4 x 100 kW & 5 x 500 kW (currently operating at 100 & 250 kW according to HFCC registrations)

Time/UTC	Days	Station	Language	kHz	kW	Target area
0030-0100	Daily	BBC	Dari	7295	250	Afghanistan
0330-0400	Daily	Voice of America	Somali	7260	250	Horn of Africa
0330-0430	Daily	Voice of America	Rwanda-Rundi	7225	250	East Africa
0500-0530	Daily	Voice of America	Hausa	9725	250	West Africa
0500-0600	Sat	BBC	Rwanda-Rundi	17815	250	East Africa
0529-0600	Sun	BBC	Rwanda-Rundi	17815	250	East Africa
1200-1230	Daily	BBC	French	17535	250	North Africa
1400-1430	Mon-Fri	BBC	Hausa	25700	250	West Africa
1400-1500	Daily	Voice of America	Kurdish	15610	250	Middle East
1530-1730	Sun	BBC	English	21470	250	Central Africa
1600-1700	Daily	Radio Dabanga	Arabic/Sudanese	15550	250	Sudan
1700-1800	Daily	Voice of America	Portuguese	17655	250	Africa
1730-1750	Mon-Fri	BBC	Amharic	15685	250	Horn of Africa
1750-1810	Mon-Fri	BBC	Oromo	15685	250	Horn of Africa
1800-1830	Daily	BBC	French	9750	250	Indian Ocean Islands
				11875	100	North Africa
1810-1830	Mon-Fri	BBC	Tigrinya	15685	250	Horn of Africa
1830-1850	Mon-Fri	BBC	Amharic	12095	250	Horn of Africa
1830-1900	Daily	Voice of America	French	6180	250	West & Central Africa
1830-1900	Sun	Follow the Bible Min.	Arabic	9585	250	North Africa
1850-1910	Mon-Fri	BBC	Oromo	12095	250	Horn of Africa
1910-1930	Mon-Fri	BBC	Tigrinya	12095	250	Horn of Africa
1930-2000	Mon-Fri	Voice of America	Rwanda-Rundi	6045	250	East Africa
2030-2100	Daily	Voice of America	Hausa	9470	250	West Africa
2130-2200	Mon-Fri	Voice of America	Bambara	11900	250	West Africa



Santa Maria di Galeria (Pippo-b - Wikipedia)